

1733 Spanish Treasure Fleet

1733 Fleet Trail Table of Contents

Page 1:	Article Cover
Page 2:	Table of Contents
Page 3:	1733 Fleet Brief History
Page 4:	List of 1733 Fleet Ships
Page 5:	1733 Fleet Treasure Trail
Page 6:	1733 Spanish Treasure Fleet Shipwreck Historical Sites
Page 7:	1733 Treasure Fleet Website Links
Page 8:	1733 Spanish Treasure Fleet Shipwreck Site Locations (Yellow Pins)
Page 9:	1733 Spanish Treasure Fleet Shipwreck Sites less the El Pinque, Nuestra Señora del Populo Wreck
Pages 10 - 12:	1733 Ship Wreck - Populo, El Pinque, Nuestra Señora del Populo
Page 13:	1733 Fleet Wreck Sites Cluster One Map
Pages 14 - 16:	1733 Fleet Wreck- El Infante or the Prince Nuestra Señora de Balvaneda
Pages 17 - 19:	1733 Fleet Wreck- San Jose y las Animas, San Jose de Las Animas
Pages 20 - 22:	1733 Fleet Wreck- Chaves Nuestra Senora del Carmen, San Antonio de Padua y las Animas
Pages 23 - 24:	1733 Fleet Wreck- El Rubi Segundo, La Capitana El Rubí, lead vessel of the fleet
Page 25:	1733 Fleet Wreck Sites Cluster Two Map
Pages 26 - 28:	1733 Fleet Wreck- Tres Puentes Nuestra Senora de Belem y San Juan Bautista Nuestra Senora de los Dolores Y Santa Isabel (aka: El Nuevo Londres)
Pages 29 - 31:	1733 Fleet Wreck- Herrera, or the Figurine Nuestra Senora de Belem y San Antonio de Padua
Page 32:	1733 Fleet Wreck Sites Cluster Three Map
Pages 33 - 37:	1733 Fleet Wreck- San Pedro
Pages 38 - 40:	1733 Fleet Wreck- San Felipe, El Terri (also spelled Lerri, Herri or Tyrri)
Page 41:	1733 Fleet Wreck Site Cluster Four Map
Pages 42 - 45:	1733 Fleet Wreck- San Francisco or Craig Wreck or Cayo Vivoras, San Francisco de Asis Nuestra Señora del Rosario San Francisco Javier y San Antonio de Padua
Pages 46 - 48:	1733 Fleet Wreck- El Gallo Indiano , La Almiranta, rear guard of the fleet (aka: Cannonball Wreck) Almiranta Nuestra Senora de Balvaneda
Pages 49 - 52:	1733 Fleet Wreck- Nuestra Senora de Las Augustias y San Raphael (aka: San Rafael or El Charanguero Grande)
Pages 53 - 55:	1733 Fleet Wreck- El Sueco de Arizón Nuestra Senora del Rosario San Antonio y San Vicente Ferrer
Pages 56 - 60:	1733 Fleet Wreck- San Ignacio Sumey de San Ignacio
Pages 61 - 63:	Appendix A 1733 Ship Wreck Sites Not Found or Returned
Pages 64 - 68:	Appendix B Florida Keys National Marine Sanctuary
Page 68:	Appendix C: Keys Parks
Pages 69 - 70:	Appendix D: Finds on land near the Wreck Site: El Terri

1733 Fleet Brief History:

Friday, July 13, 1733 a Spanish Fleet left Havana harbor for a return voyage to Spain. On the evening of the 15th most of the ships had been sunk along the Florida Keys by a hurricane. Four ships made it back to Havana with one ship proceeded on to Spain and the other ships were sunk by the hurricane in the Florida Keys.

The ship wreck survivors gathered in groups throughout the keys and built shelters from ship wreck materials that had come ashore. A ship arrived in Havana and reported seeing many large ships grounded at a place called Head of the Martyrs. Recure Ships with supplies, food, divers and troops sailed to the wrechage site.D

Ships that were not refloated were burned in place and savage work on these ships continued for may years. When a final summary of the savalage material was totaled more gold and silver were recoved than was list on the various ships' manifest.

During the 1960s, most of the 1733 wrecks were relocated by modern divers.

Today the historical treasure of the 1733 fleet is the opportunity to visit the remains of these ship sites from a long gone era. **1733 Fleet History** [Web Link](#) , **1733 Fleet - Daniel Frank Sedwick, LLC** [Website Link](#)

Hundreds of ship wreck sailors and passengers made it to shore from the wreck sites, weighted down by gold, silver and emeralds. In many cases dropping rare items along their route to the safety of a key island. These survivors made it to a Keys island along an 80-mile stretch.

Metal Detecting the 1733 Fleet Trail should include the following:

- construction sites that have turned over sand and dirt for new or updated business, homes, roads and gas, water, sewer lines. There has been treasure found from these types of construction sites. For years there were many survivor camps on the island while the ships were being salvaged which contributed to treasure being lost.
- all beaches that are near wreck sites with both public or private land access. To gain access to beach water where private land controls access – permission must be gained from the specific land owner before entering these beach waters.
- metal Detecting Highway #1 beach waters that are parallel to wreck sites where the water is not deep or does not has very swift currents. **Use EXTREME Cautious.**
- draw lines from a wreck site to islands near the wreck site and metal detecting a ~ 75-yard path on either side of the drawn line looking for dropped treasure as sailors and passage fled the wrecks.

Florida Keys Tides [Web Link](#)

Largo Sound to Upper Matecumbe Key [Web Link](#)

Indian Key to Conch Key [Web Link](#)

Tom's Harbor to West Bahia Honda Key [Web Link](#)

Horseshoe Keys to Big Pine Key [Web Link](#)

Annette Key to Howe Key [Web Link](#)

Summerland Key to Cudjoe Key to Sugarloaf Key [Web Link](#)

Pumpkin Key to O'Hara Key [Web Link](#)

Florida [Keys Cams](#)

[Bahia Honda State Park Cam](#)

[Marathon Streaming Cam](#)

[Tranquility Bay](#)

[Southern Most Cam](#)

[Fort Zachary Taylor Beach Cam](#)

1733 List of Treasure Fleet Shipwrecks

1- El Pinque, Nuestra Señora del Populo

- 2- El Infante or the Prince, Nuestra Señora de Balvaneda
- 3- San Jose y las Animas, San Jose de Las Animas
- 4- Chaves, Nuestra Senora del Carmen, San Antonio de Padua y las Animas
- 5- La Capitana, El Rubi Segundo, El Rubí
- 6- Herrera, or the Figurine, Nuestra Senora de Belem y San Antonio de Padua
- 7- Tres Puentes, Nuestra Senora de Belem y San Juan Bautista, Nuestra Se?ra de los Dolores Y Santa Isabel (aka:El Nuevo Londres)

8- San Pedro

- 9- El Terri, San Felipe, (aka: Lerri, Herri or Tyrri)
- 10- San Francisco or Craig Wreck or Cayo Vivoras, San Francisco de Asis
- 11- La Almiranta, El Gallo Indiana (aka: Cannonball Wreck) Almiranta Nuestra Senora de Balvaneda
- 12- Las Augustias, Nuestra Senora de las Augustias y San Raphael (aka: San Rafeal, El Charanguero Grande)
- 13- El Sueco de Arizón, Nuestra Senora del Rosario, San Antonio y San Vicente Ferrer

May Not be the Correct Wreck for this Site

- 14- San Ignacio, Sumey de San Ignacio

Wreck Site Not Found

- 15- San Fernando, Nuestra Senora de Los Reyes, San Fernando y San Francisco de Paula
- 16- El Floridana

Refitted and Sailed back to Havana

- 17- Nuestra Senora del Rosario y Santo Domingo (Murgie)
- 18- El Gran Poder de Dios y Santa Ana, aka: (Poder)
- 19- Balandra (aka: La Balandra, El Santander).
- 20- Nuestra Señora del Rosario, San Francisco Javier y San Antonio de Padua

Sailed on to Cadiz

- 21- El Africa, Senor San Joseph

Florida Keys National Marine Sanctuary in 1990. The removal of artifacts from any of the sites is prohibited today.

- 1 - Always Fill all holes dug since many people use the beach for other recreational purposes.
- 2 - Always remove and carry out all trash dug.
- 3 - Never metal detect the beach dunes and grass area its illegal.
- 4 - Never metal detect in leased waters its illegal.
- 5 - Never Trespass on Private Property without Permission.
- 6 - Never metal detect in National Parks, National Beaches and **the 1733 ship sites in the Keys National Marine Sanctuary it is illegal.**

1733 Fleet Treasure Trail

Highway #1

Biscayne National Park 25°28.967N 80°12.50W		Populo 25°21.85N 80°09.690W
Harry Harris Beach & Park 25°1.605N 80°29.596W	MM91	El Infante 24°56.556N 80°28.531W
Public Beach 24°53 3.78N 80°41 11.01W	MM89	San Jose 24°56.919N 80°29.334W
Fossil Reef St. Park 24°56.956N 80°35.762W	MM85-86	Chaves 24° 56.179N 80° 34.985W
	MM87	El Rubi 24° 55.491N 80° 30.891W
Fossil Reef State Park 24°56.962N 80°35.762W	MM84.9	
	MM83	Herrera 24° 54.326N 80° 35.538W
	MM83	Tres Puentes 24° 53.612N 80° 35.012W
Roadside Park, Bayside	MM80	
Beach Access 24°53.093 80°41.116W	MM77	San Pedro 24° 51.802N 80° 40.780W
No homes Ocean Side for a 1/2 mile	MM75	El Terri 24° 50.761N 80° 42.850W
Residents Only Beach Access 24°51.226N 80°43.870W	MM74	
Annies Beach Park 24°50.935N 80°44.455W	MM72	San Francisco 24° 49.185N 80° 45.425W
Beach location 2 miles from wreck 24°50.795N 80°44.657W		
Long Key State Park 24°48.966N 80°49.383W	MM72	El Gallo Indiano 24°48.633N 80°45.932W
Parking available along US#1 24°48.235N 80°50.895W	MM65	Las Augustias 24°47.455N 80°51.738W
	MM62-63	El Sueco Site #1 24°46.625N 80°53.372W Site #2 24°46.728N 80°53.480W
Curry Hammock State Park 24°44.476N 80°58.847W	MM56	
Hammock State Park 24°44.792N 80°58.957W	MM57	San Ignacio 24°41.70N 80°56.44W
Sombrero Beach 24°41.536N 81°5.130W	MM 50	
24°33.484N 81°48.389W		Mel Fisher Maritime Museum

1733 Spanish Treasure Fleet Shipwreck Historical Sites

Biscayne National Park [Website](#)

Populo, El Pinque, Nuestra Señora del Populo [Website](#)

US National Register of Historic Places [Website](#)

San Felipe, El Terri (also spelled Lerri, Herri or Tyrrri) [Website](#)

Underwater Archaeological Preserve and a Florida State Park [Website](#)

San Pedro [Website](#)

Florida Keys National Marine Sanctuary [Website](#)

John Pennekamp Coral Reef State Park [Website](#)

Map from flheritage.com [Website](#)



1733 Treasure Fleet Website Links:

1733 Fleet History [Web Link](#)

1733 Fleet - Daniel Frank Sedwick, LLC [Website Link](#)

1733 Fleet Shipwreck Location [Web Link](#)

1733 Fleet Wikipedia List of Spanish Plate Fleet Shipwrecks [Web Link](#)

1715 and 1733: Spanish Treasure Fleets Disasters [Web Link](#)

Creating a Shipwreck Trail: Documenting the 1733 Spanish Plate Fleet Wrecks [Web Link](#)

Shoestring Weekends Blog [Web Link](#)

History of the Spanish Plate Fleets [Web Link](#)

Key Largo Diving Shipwreck List and GPS Coordinates [Website Link](#)

Florida's Shipwrecks and Treasures [Website Link](#)

Spain's Treasure Fleet Disaster [Website Link](#)

Florida Keys National Marine Sanctuary Welcome [Website Link](#)

Florida Keys National Marine Sanctuary Facts Sheet [Website Link](#)

Frequently Asked Questions about Submerged Cultural Resources in the Florida Keys National Marine Sanctuary [Website Link](#)

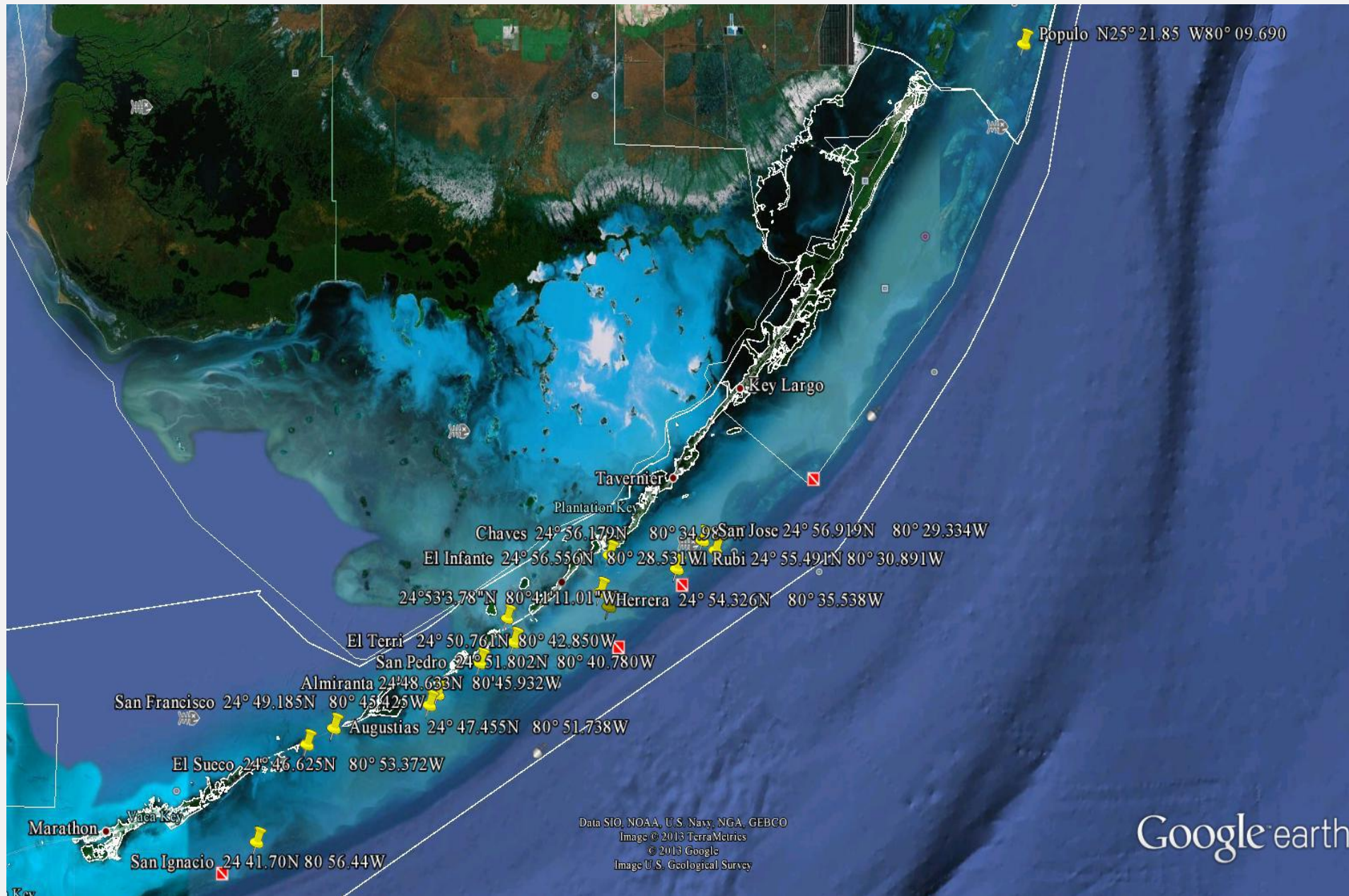
Keys National Marine Sanctuary Summary of Regulations Brochure [Website Link](#)

General Keys History [Website Link](#)

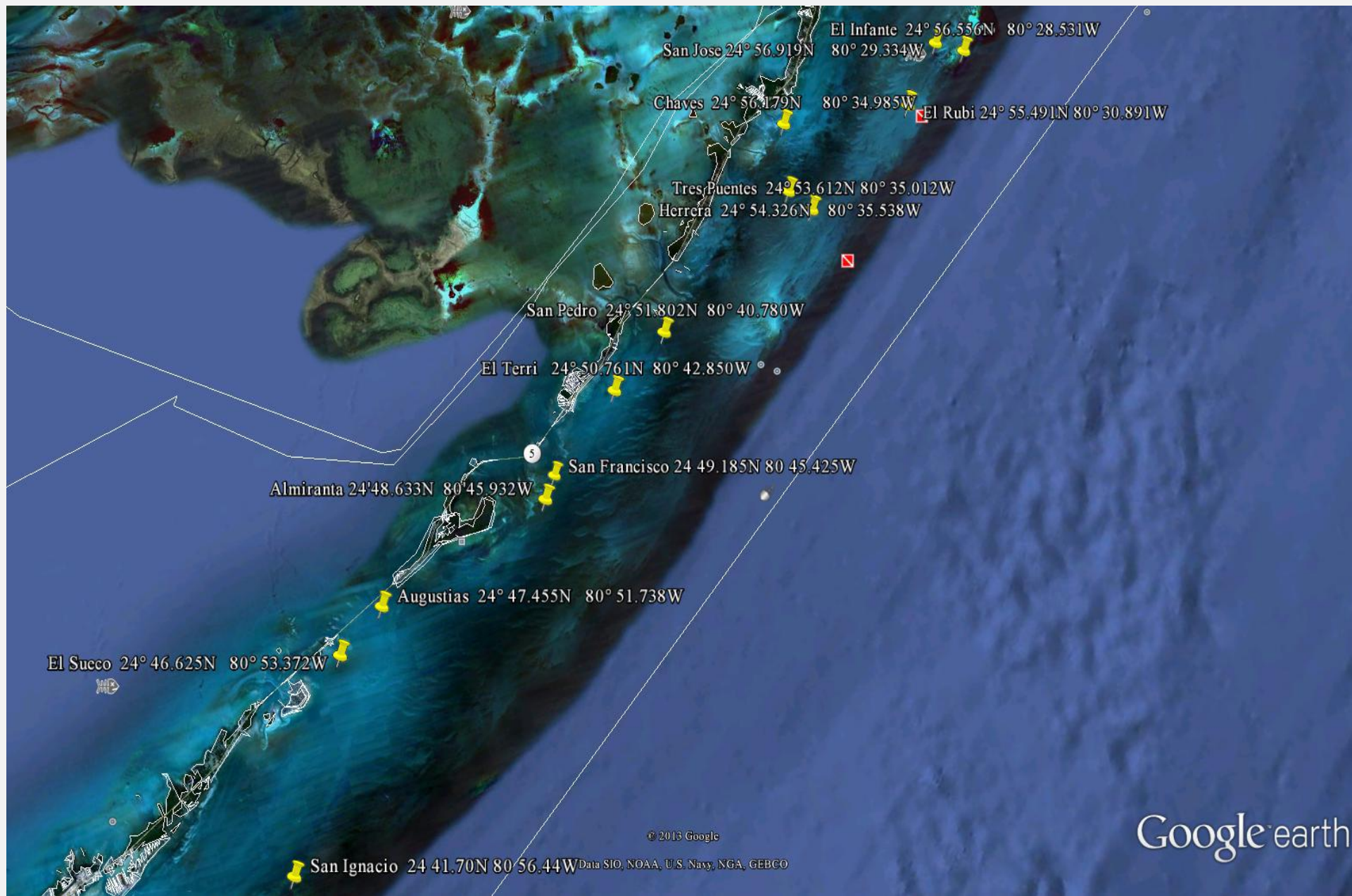
Tresurenent Forum – Marathon, FL [Website Link](#)

Beaches & Parks of the Florida Keys [Website Link](#)

1733 Spanish Treasure Fleet Shipwreck Site Locations (Yellow Pins)



1733 Spanish Treasure Fleet Shipwreck Sites *less the El Pinque, Nuestra Señora del Populo Wreck*



Populo, El Pinque Nuestra Señora del Populo

The northernmost of the 1733 ships is the wreck of the scout ship Populo. Also called El Pinque (The Pink - a type of small dispatch vessel), the vessel's official name was Nuestra Señora del Populo. [Website Link](#)

Vessel Owner: King

Vessel Weight: 150 to 250 Ton

Vessel Cannon Number: 8 to 12

Vessel Manifest: Unknown

Wreck GPS Coordinates: N25° 21.85 W80° 09.690

Wreck Information: State site file #8MO147

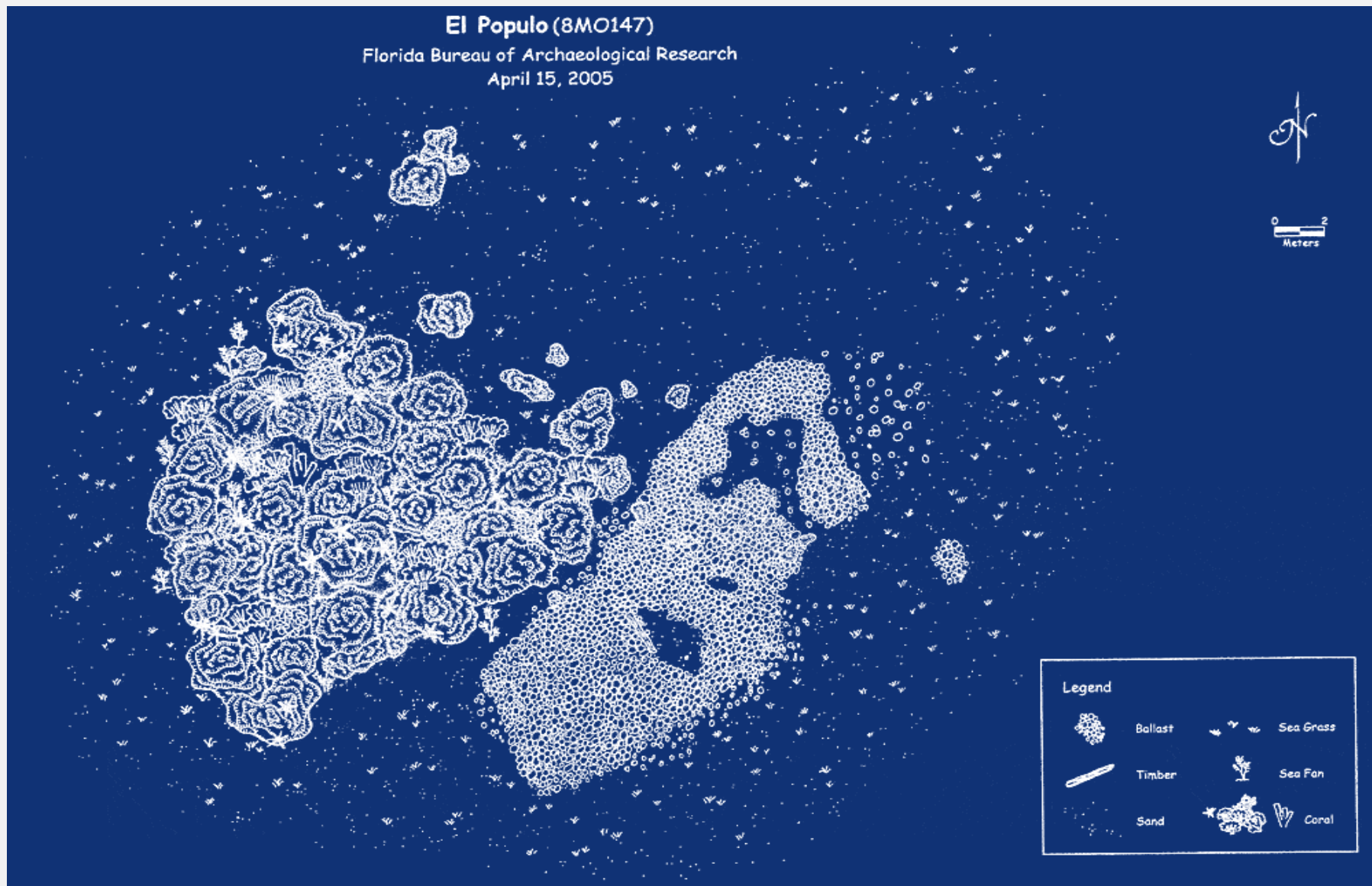
Wreck Location: Populo is in Biscayne National Park.
6.7 Miles from Angelfish Key

Beach Access: It is illegal to bring a metal detecting in any National Park or to metal detect any National Park Recreational Beach.

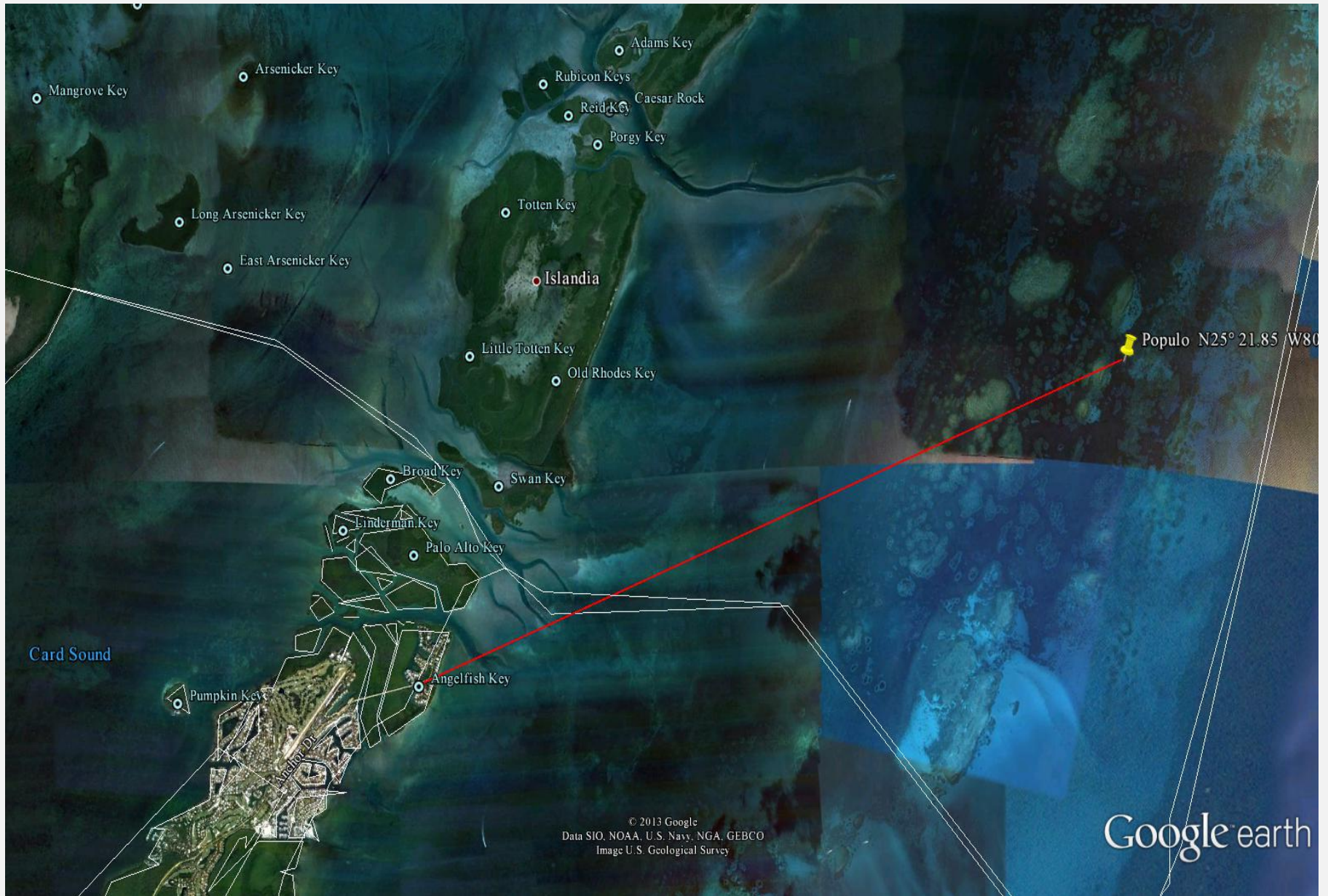
Florida Bureau of Archaeology Diagram of Shipwreck Site [Website Link](#)

Florida Keys National Marine Sanctuary in 1990. The removal of artifacts from any of the sites is prohibited today.

- 1 - Always Fill all holes dug since many people use the beach for other recreational purposes.
- 2 - Always remove and carry out all trash dug.
- 3 - Never metal detect the beach dunes and grass area its illegal.
- 4 - Never metal detect in leased waters its illegal.
- 5 - Never Trespass on Private Property without Permission.
- 6 - Never metal detect in National Parks, National Beaches and the 1733 ship sites in the Keys National Marine Sanctuary it is illegal.



Wreck Site: Populo N25° 21.85 W80° 09.690 (Yellow Pin)



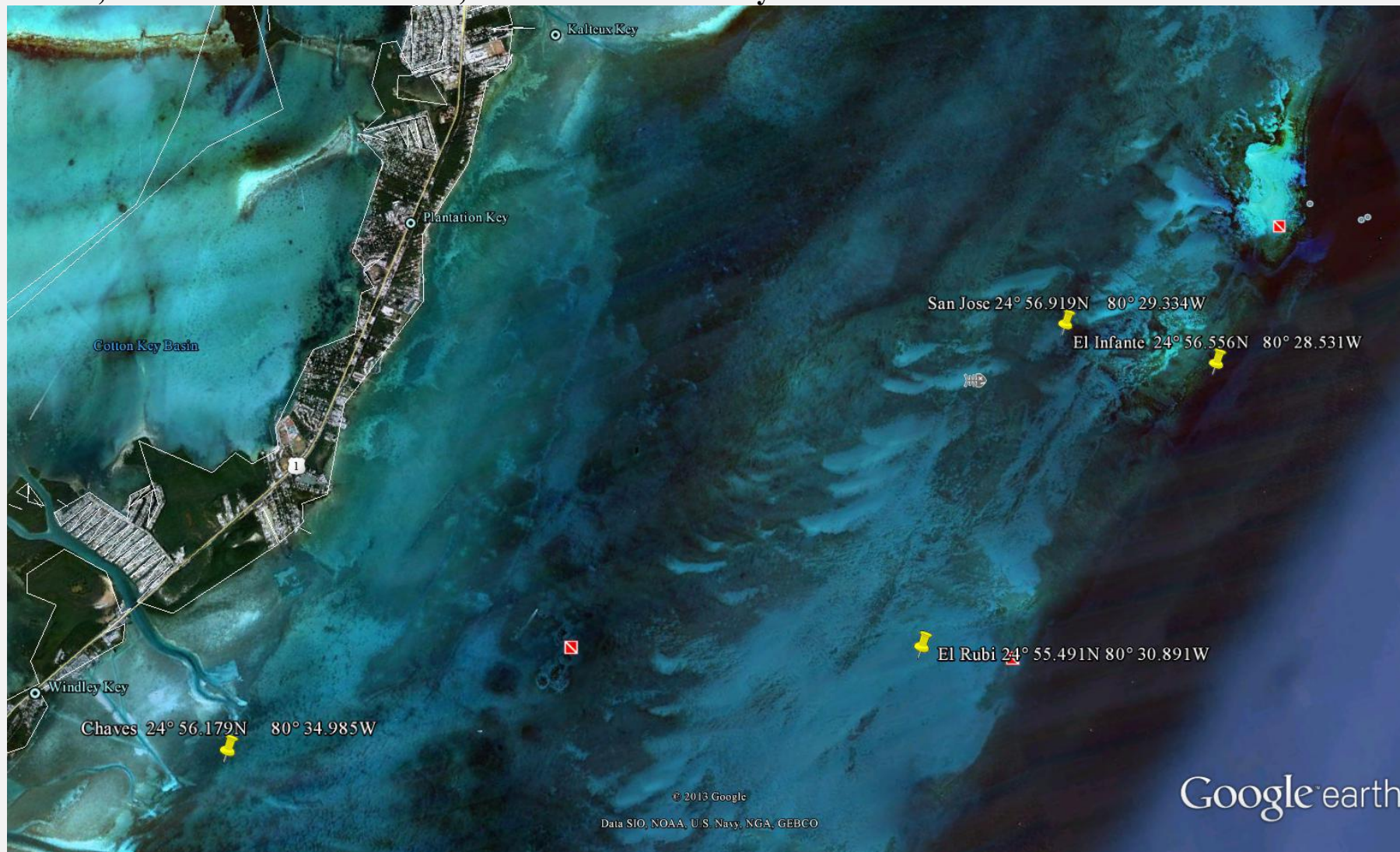
1733 Fleet Wreck Sites Cluster One Map:

San Jose y las Animas, San Jose de Las Animas

El Infante or the Prince, Nuestra Señora de Balvaneda

La Capitana, El Rubi Segundo, El Rubí

Chaves, Nuestra Senora del Carmen, San Antonio de Padua y las Animas



El Infante or the Prince Nuestra Señora de Balvaneda

Vessel Owner: King

Vessel Weight: 326 Ton - Galleon

Vessel Cannon Number: 40

Vessel Manifest:

- + 562,509 pesos in silver specie and bullion
- + 643 marcos in worked silver
- + indigo, vanilla, ceramic jars, jugs, and plates

Wreck GPS Coordinates: 24° 56.556N 80° 28.531W

Wreck Location: 5.3 miles offshore Plantation Key

Wreck Mileage Marker: 91 - No Public Access

Galleon El Infante [Website Link](#)

Florida Division of Historical Resources [Website Link](#)

Florida Bureau of Archaeology Diagram [Website Link](#)

Sunken Spanish Treasure Ships Include El Infante Off Plantation Key [Website Link](#)

Beach Access:

Mileage Marker: 91 - 92, H. Harris Park

E. Beach Rd (Park on the Beach) GPS Coordinates: 25 01.460N 80 29.712N

Mileage Marker: 92, Old Settlers Park

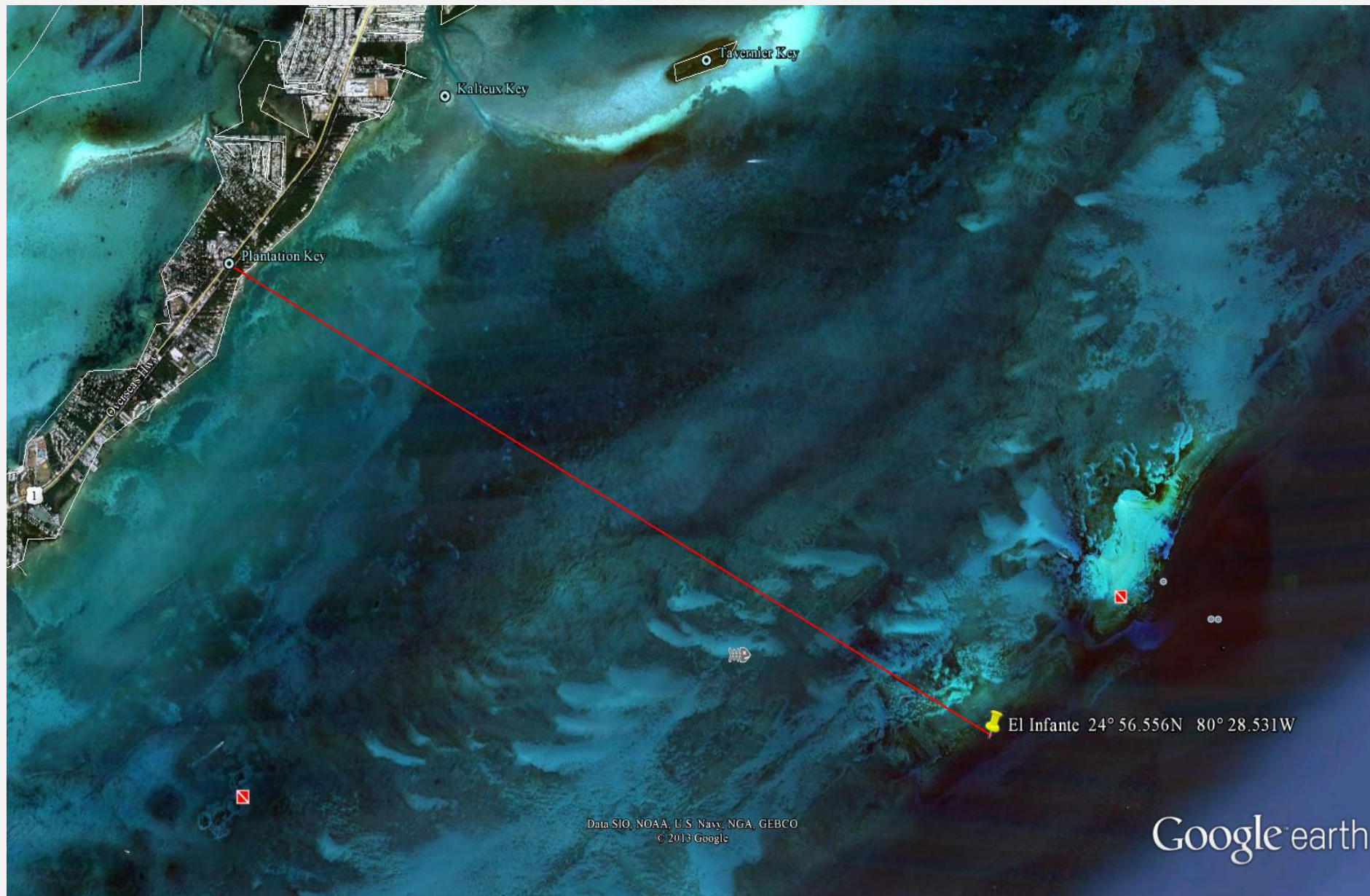
US 1 Service Road GPS Coordinates: 25 00.565N 80 30.982W

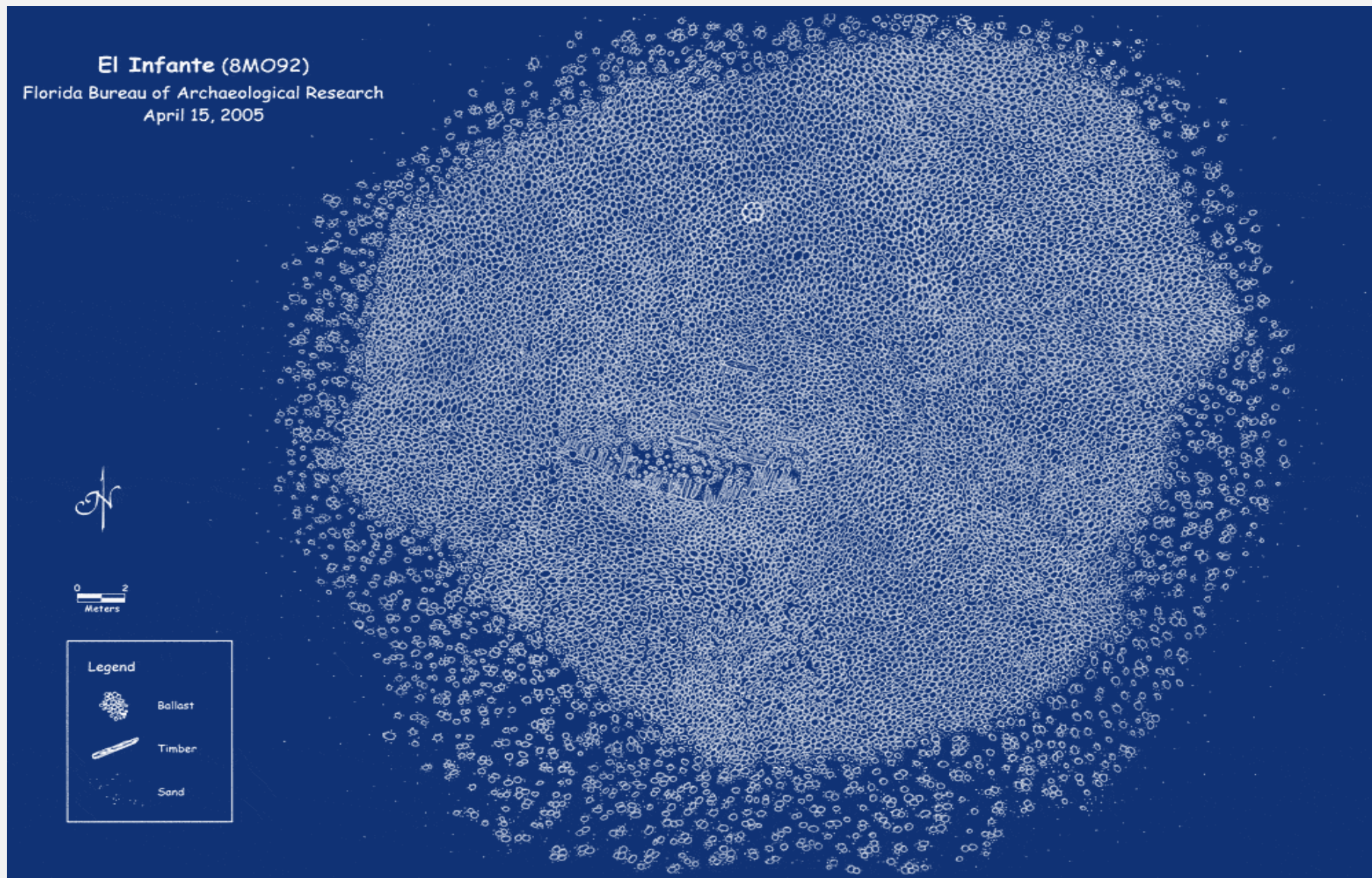
Beach Access: No Public Beach Access available at Plantation Keys adjacent to the El Infante wreck site.

Florida Keys National Marine Sanctuary in 1990. The removal of artifacts from any of the sites is prohibited today.

- 1 - Always Fill all holes dug since many people use the beach for other recreational purposes.
- 2 - Always remove and carry out all trash dug.
- 3 - Never metal detect the beach dunes and grass area its illegal.
- 4 - Never metal detect in leased waters its illegal.
- 5 - Never Trespass on Private Property without Permission.
- 6 - Never metal detect in National Parks, National Beaches and **the 1733 ship sites in the Keys National Marine Sanctuary** it is illegal.

Wreck Site: El Infante 24° 56.556N 80° 28.531W (Yellow Pin)





San Jose y las Animas San Jose de Las Animas

Vessel Owner: Private (Merchant nao)

Vessel Weight: 326 Ton (English Built Merchant Vessel)

Vessel Manifest:

+ 30,435 pesos in silver specie and bullion

+ sugar, chocolate, indigo, cochineal, dyewood, cocoa, hides, ceramic ware, tobacco, vanilla

Wreck GPS Coordinates: 24° 56.919N 80° 29.334W

Wreck Location: 4.3 miles southeast of Plantation Key

Wreck Status: Lies in 29 ft of water

Wreck Mileage Marker: # 89

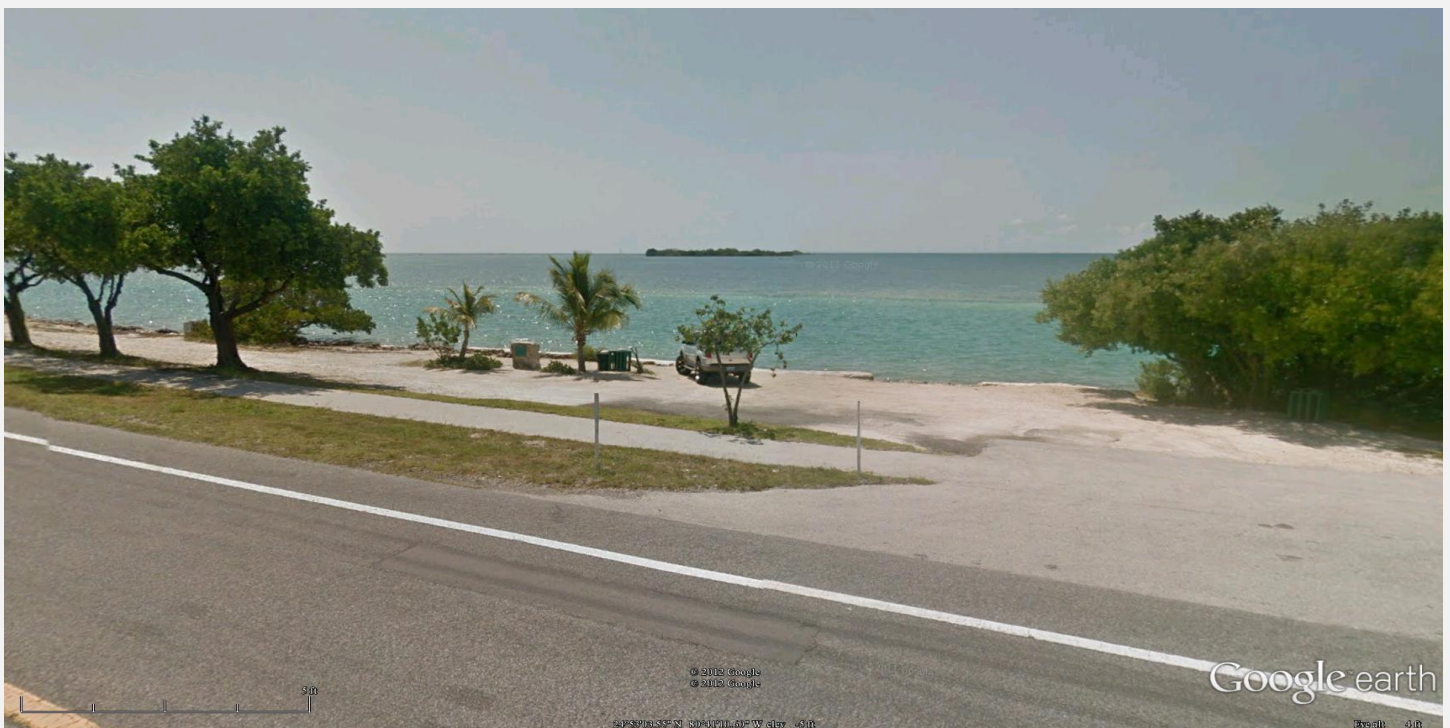
Florida Division of Historical Resources [Website Link](#)

Merchant Vessel San José [Website Link](#)

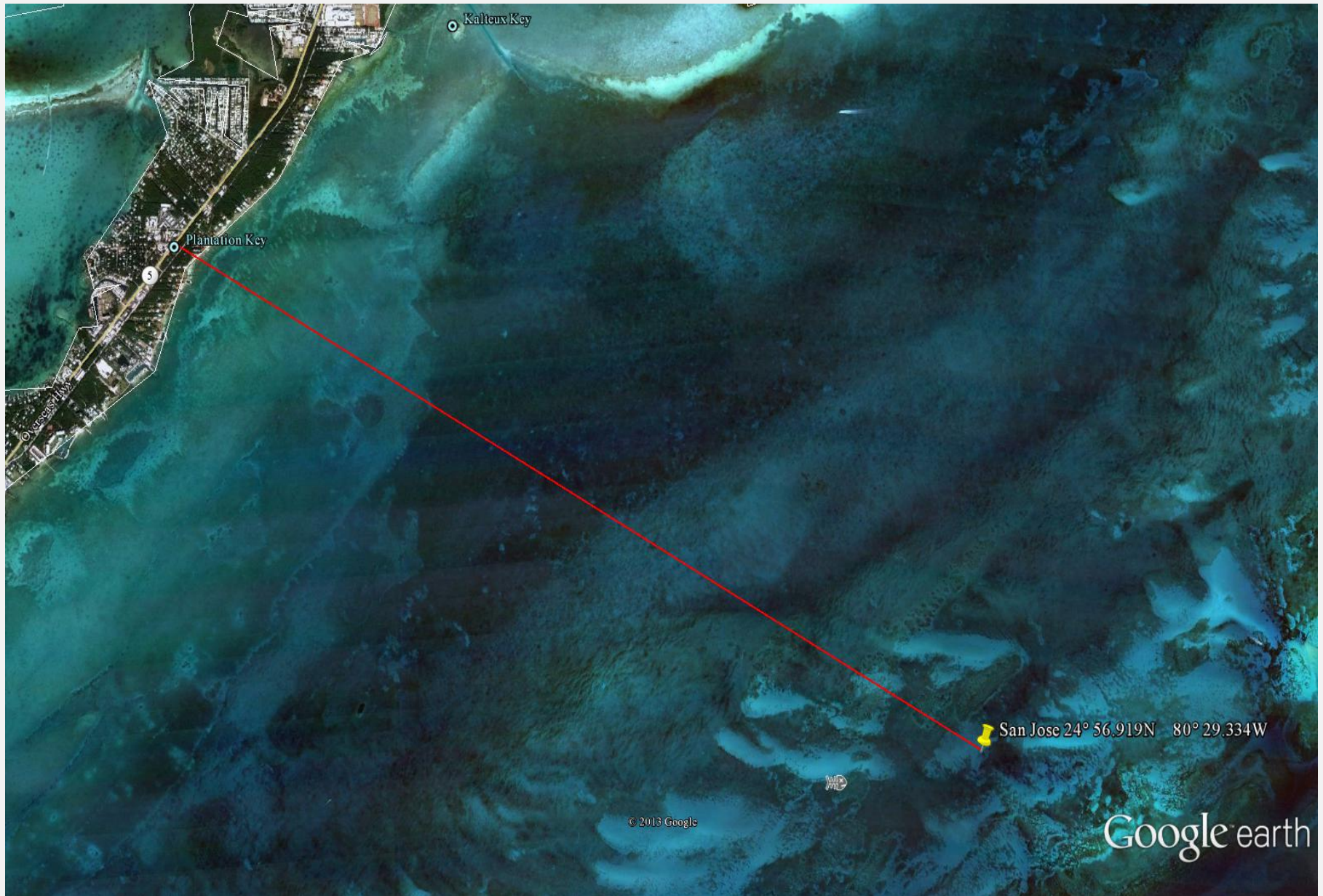
Florida Bureau of Archaeology Diagram [Website Link](#)

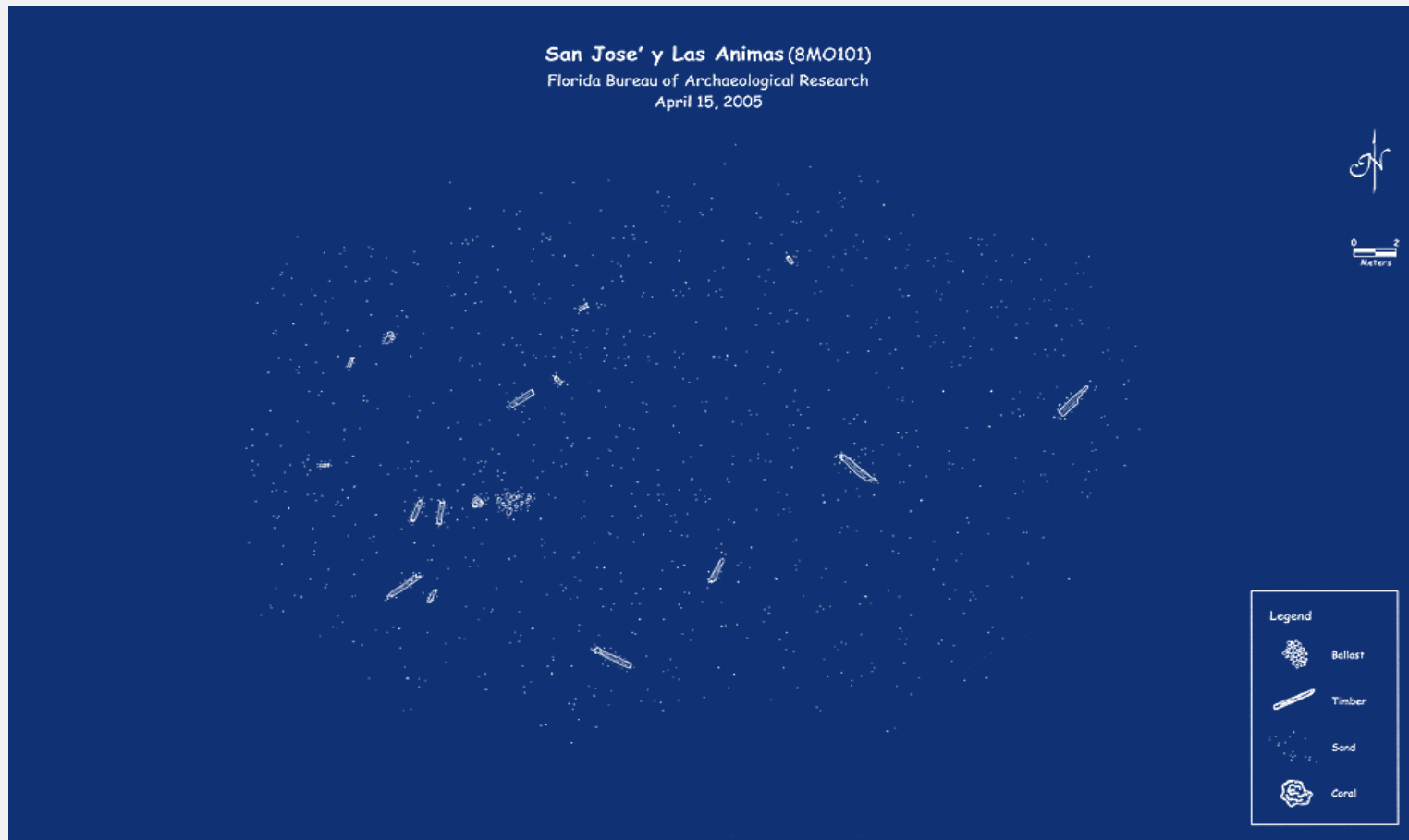
Artifacts and Beauty Surround the Protected San Jose Shipwreck [Website Link](#)

Beach Access: Public Beach Use Area Just East of Indian key at 24°53'3.78"N 80°41'11.01"W



Wreck Site: San Jose 24° 56.919N 80° 29.334W (Yellow Pin)





Florida Keys National Marine Sanctuary in 1990. The removal of artifacts from any of the sites is prohibited today.

- 1 - Always Fill all holes dug since many people use the beach for other recreational purposes.
- 2 - Always remove and carry out all trash dug.
- 3 - Never metal detect the beach dunes and grass area its illegal.
- 4 - Never metal detect in leased waters its illegal.
- 5 - Never Trespass on Private Property without Permission.
- 6 - Never metal detect in National Parks, National Beaches and **the 1733 ship sites in the Keys National Marine Sanctuary** it is illegal.

Chaves Nuestra Senora del Carmen, San Antonio de Padua y las Animas

Vessel Weight: 221 Ton

Vessel Owner: Private (Merchant nao)

Vessel Manifest:

+ carried no treasure

+ sugar, chocolate, indigo, cochineal, dyewood, cocoa, hides, ceramic ware, tobacco, vanilla

Wreck GPS Coordinates: 24° 56.179N 80° 34.985W

Wreck Location: Lies 8 to 12 ft of water 1.2 miles off Windley Key

Wreck Mileage Marker: # 85 - 86

Florida Division of Historical Resources [Website Link](#)

Merchant Vessel Chaves [Website Link](#)

Florida Bureau of Archaeology Diagram [Website Link](#)

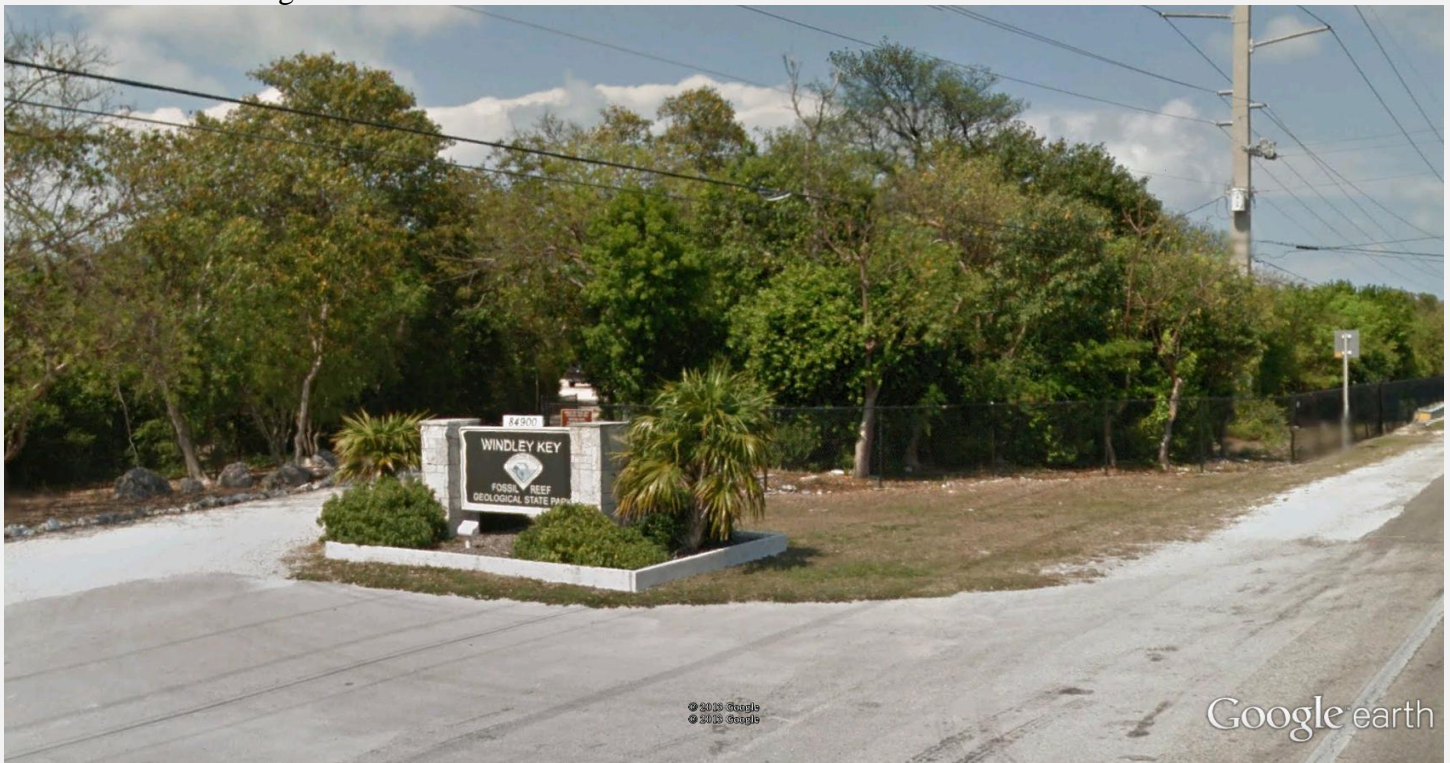
Beach Access: No Public Beach Access available at Windley Key adjacent to the Chaves wreck site.

Windley Key consist of Resorts and homes.

Windley Key Fossil Reef State Park (On Opposite Side of Road - See Photo Below)

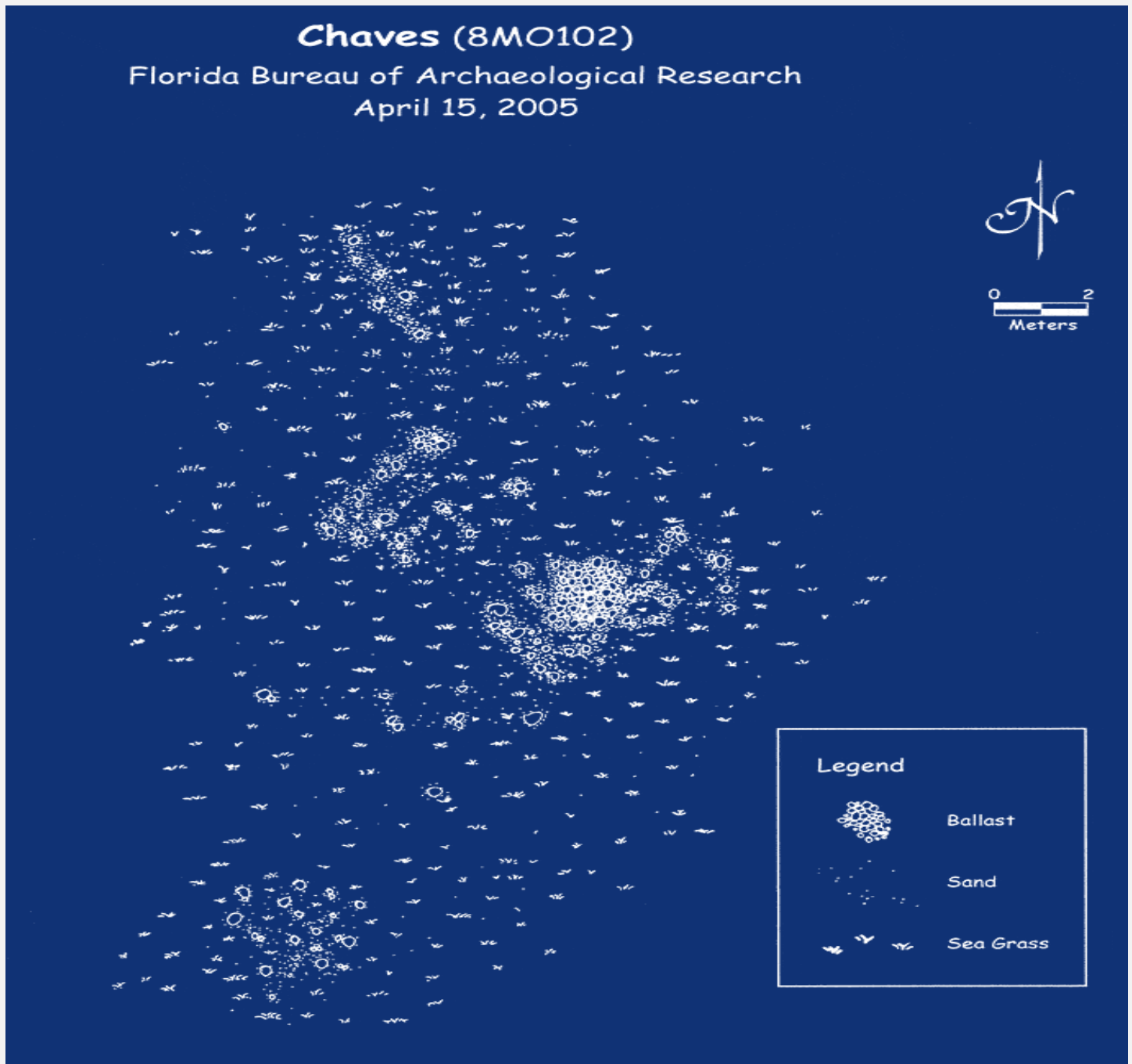
GPS Coordinates: 24 56.956N 80 35.762W

Mileage Marker: # 85 - 86



Wreck Site: 24° 56.179N 80° 34.985W (Yellow Pin)





Florida Keys National Marine Sanctuary in 1990. The removal of artifacts from any of the sites is prohibited today.

- 1 - Always Fill all holes dug since many people use the beach for other recreational purposes.
- 2 - Always remove and carry out all trash dug.
- 3 - Never metal detect the beach dunes and grass area its illegal.
- 4 - Never metal detect in leased waters its illegal.
- 5 - Never Trespass on Private Property without Permission.
- 6 - Never metal detect in National Parks, National Beaches and **the 1733 ship sites in the Keys National Marine Sanctuary** it is illegal.

El Rubi Segundo, La Capitana El Rubí, lead vessel of the fleet

Vessel Owner: King

Vessel Cannon Number: 60

Vessel Manifest: (Property of Private Citizens)	(Kings Property divided between El Gallo & El Rubi)
+ 104 castellanos in worked gold	1,519.527 pesos in silver species and bullion
+ 3,200 pesos in gold specie	4,110 granos in gold
+ 5,080,285 pesos in silver specie and bullion	unspecified worked gold and silver
+ 6,099 marcos in worked silver	copper ingots
+ all the property of private citizens	

Wreck Status: Remains lie in 18 ft of water. Resides within the Florida Keys National Marine Sanctuary

Wreck GPS Coordinates: 24° 55.491N 80° 30.891W

Wreck Location: 5.7 miles seaward of Windley Key

Wreck Mileage Marker: #87

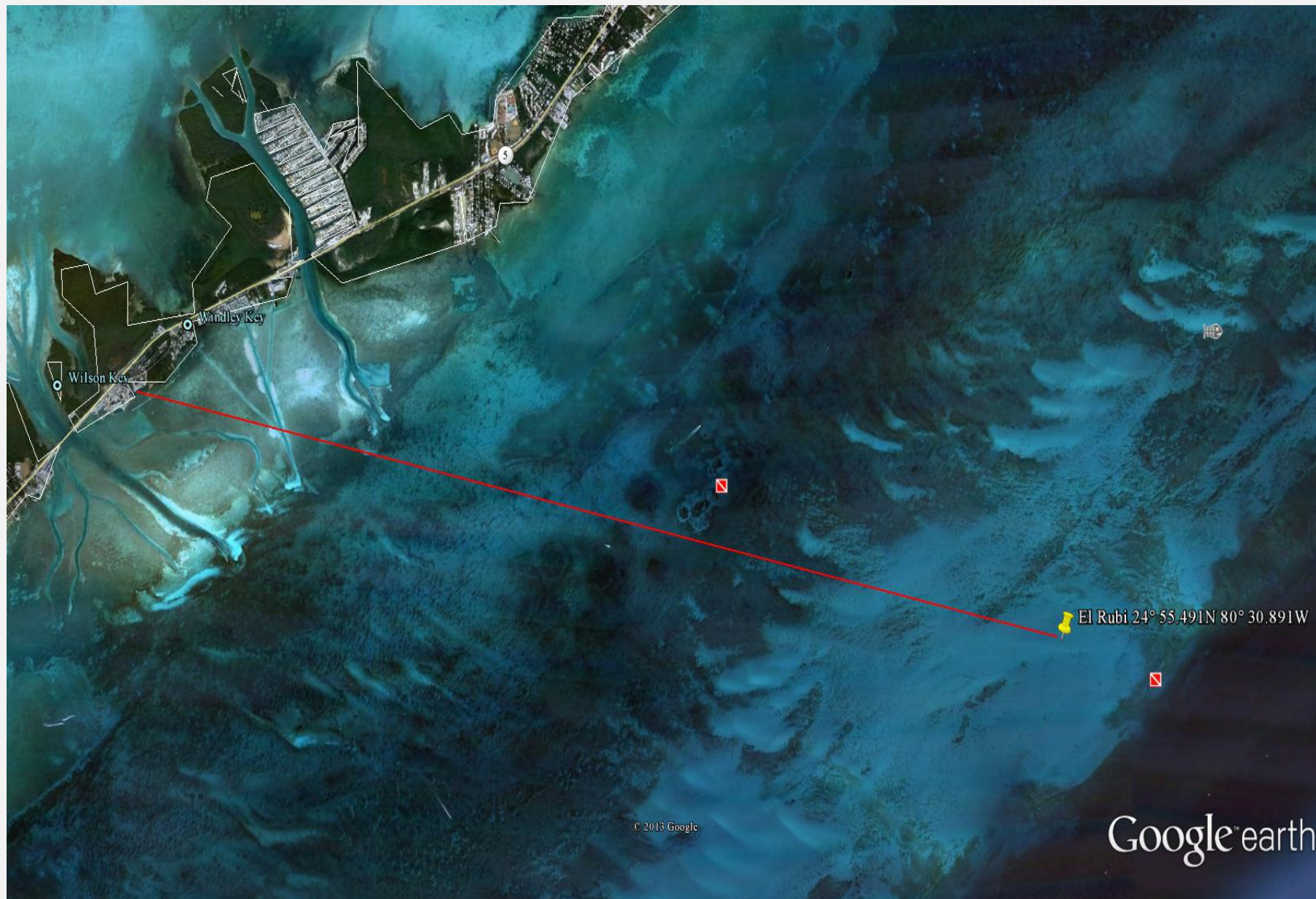
Capitana El Rubi Segundo Carried A Wealth of Spanish Treasure [Website Link](#)

Beach Access: No Public Beach Access available at Plantation Key or Windley Key adjacent to the El Rubi wreck site

Florida Keys National Marine Sanctuary in 1990. The removal of artifacts from any of the sites is prohibited today.

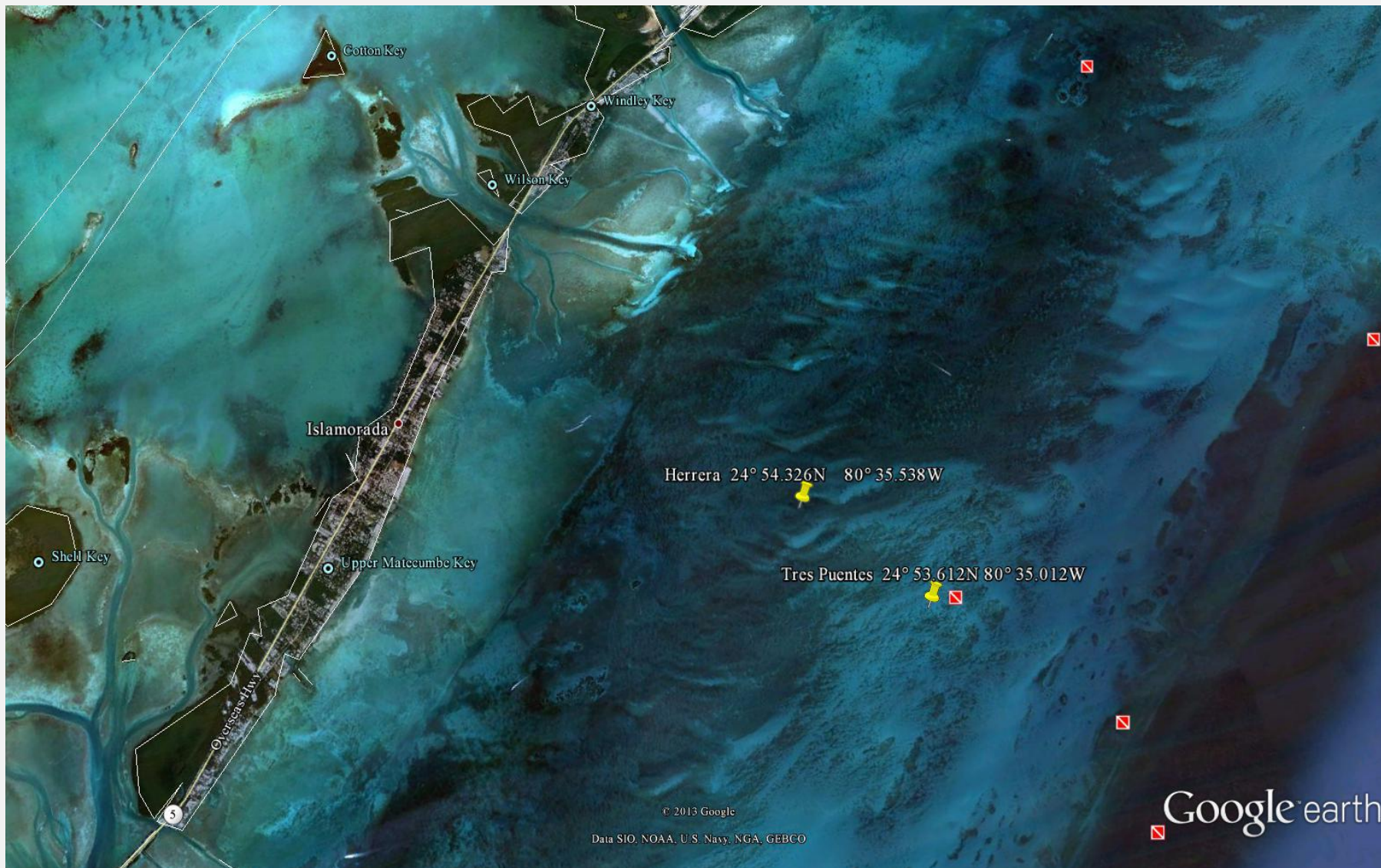
- 1 - Always Fill all holes dug since many people use the beach for other recreational purposes.
- 2 - Always remove and carry out all trash dug.
- 3 - Never metal detect the beach dunes and grass area its illegal.
- 4 - Never metal detect in leased waters its illegal.
- 5 - Never Trespass on Private Property without Permission.
- 6 - Never metal detect in National Parks, National Beaches and **the 1733 ship sites in the Keys National Marine Sanctuary** it is illegal.

Wreck Site: El Rubi 24° 55.491N 80° 30.891W (Yellow Pin)



1733 Fleet Wreck Site Cluster Two Map:

**Herrera, or the Figurine, Nuestra Senora de Belem y San Antonio de Padua
Tres Puentes, Nuestra Senora de Belem y San Juan Bautista, Nuestra Senora de los Dolores Y Santa Isabel
(aka:El Nuevo Londres)**



Tres Puentes

Nuestra Senora de Belem y San Juan Bautista

Nuestra Senora de los Dolores Y Santa Isabel (aka: El Nuevo Londres)

Vessel Weight: 296 Ton Merchant nao, (Foreign Built)

Vessel Manifest:

- + carried unspecified small amount of silver specie
- + sugar, chocolate, indigo, cochineal, dyewood, cocoa, hides, ceramic ware, tobacco, vanilla

Wreck Status: Remains lie in 15 ft of water. This is not a Sanctuary Preservation Area so any artifacts you find may be kept.

Wreck GPS Coordinates: 24° 53.612N 80° 35.012W

Wreck Location: 3.4 miles offshore of Islamorada and 3.5 miles offshore of Upper Matcumbe Key

Wreck Mileage Marker: # 83

Florida Division of Historical Resources [Website Link](#)

Merchant Vessel Tres Puentes [Website Link](#)

Situated under 15 feet of water in a vast sandy area dotted with streaks of sea grass, the wreck of Tres Puentes (three decks) is slowly sinking into the seabed. She is thought to have been one of two ships in the 1733 fleet:

Florida Bureau of Archaeology Diagram [Website Link](#)

Spanish Treasure Hunting at The Mysterious Tres Puentes [Website Link](#)

Note: This is a Sanctuary Preservation Area so any artifacts you find cannot be removed. The ships ballast stone and pieces of timber are primarily what's left.

Beach Access:

Florida Keys National Marine Sanctuary in 1990. The removal of artifacts from any of the sites is prohibited today.

- 1 - Always Fill all holes dug since many people use the beach for other recreational purposes.
- 2 - Always remove and carry out all trash dug.
- 3 - Never metal detect the beach dunes and grass area its illegal.
- 4 - Never metal detect in leased waters its illegal.
- 5 - Never Trespass on Private Property without Permission.
- 6 - Never metal detect in National Parks, National Beaches and **the 1733 ship sites in the Keys National Marine Sanctuary** it is illegal.

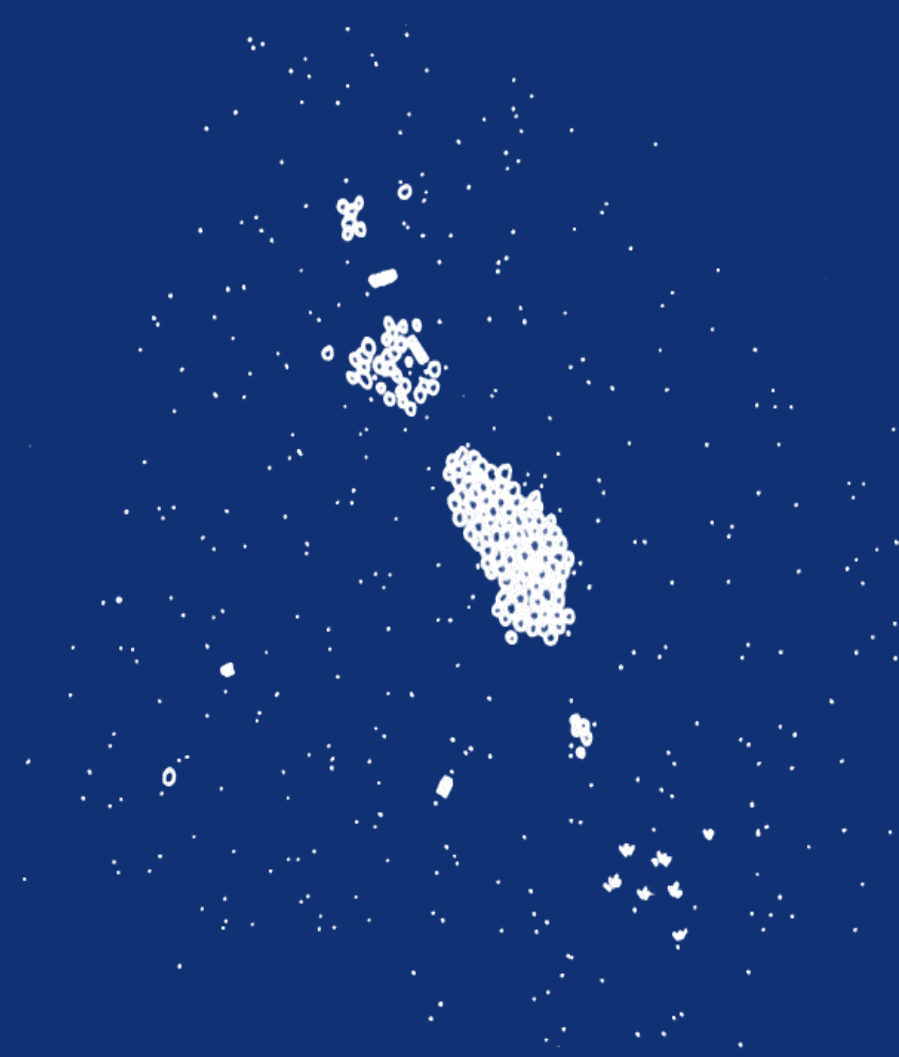
Wreck Site: Tres Puentes 24° 53.612N 80° 35.012W (Yellow Pin)



Tres Puentes (8MO177)

Florida Bureau of Archaeological Research

April 15, 2005



Legend

	Ballast
	Timber
	Sand
	Sea Grass

Herrera, or the Figurine Nuestra Senora de Belem y San Antonio de Padua

Vessel Weight: 242 Ton (English Built Merchant nao)

Vessel Owner: Private

Vessel Manifest:

- + 1200 pesos in silver specie and bullion
- + 359 marcos in worked silver
- + animal figurines
- + sugar, chocolate, indigo, cochineal, dyewood, cocoa, hides, ceramic ware, tobacco, vanilla

Wreck GPS Coordinates: 24° 54.326N 80° 35.538W

Wreck Status: Remains lie in 16 ft of water

Wreck Location: 2.4 miles offshore of Islamorada or 2.7 miles off Upper Matcumbe Key

Wreck Mileage Marker: #83

Florida Division of Historical Resources [Website Link](#)

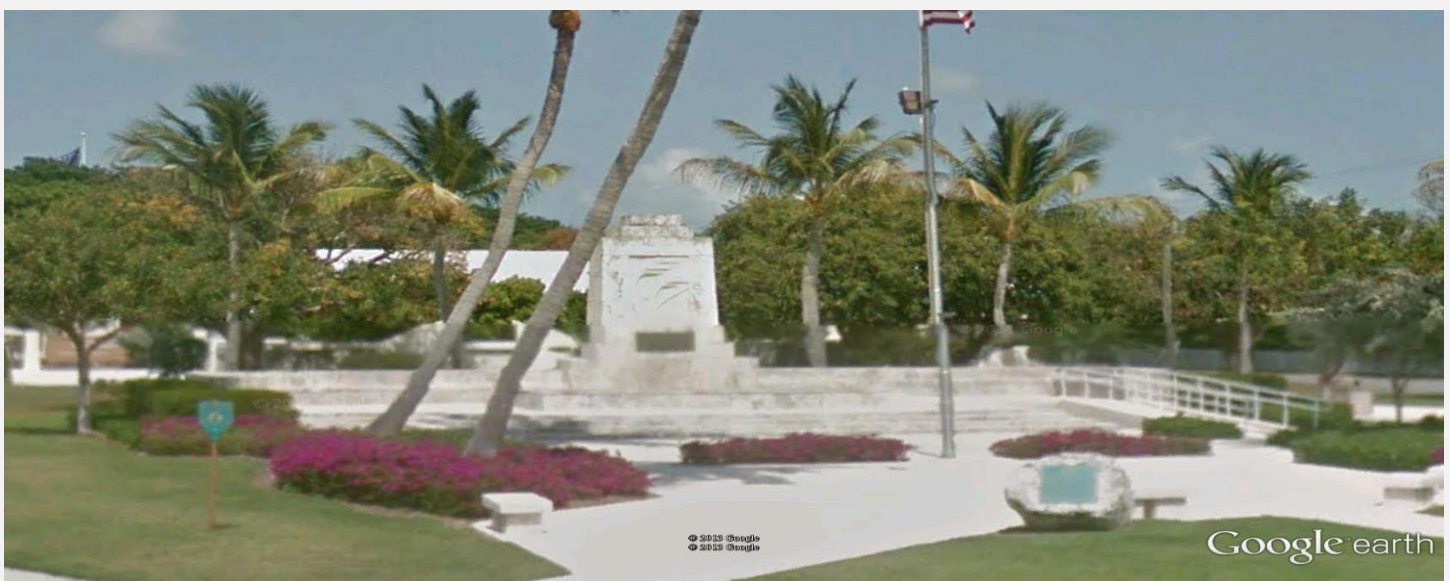
Merchant Vessel Herrera [Website Link](#)

Florida Bureau of Archaeology Diagram [Website Link](#)

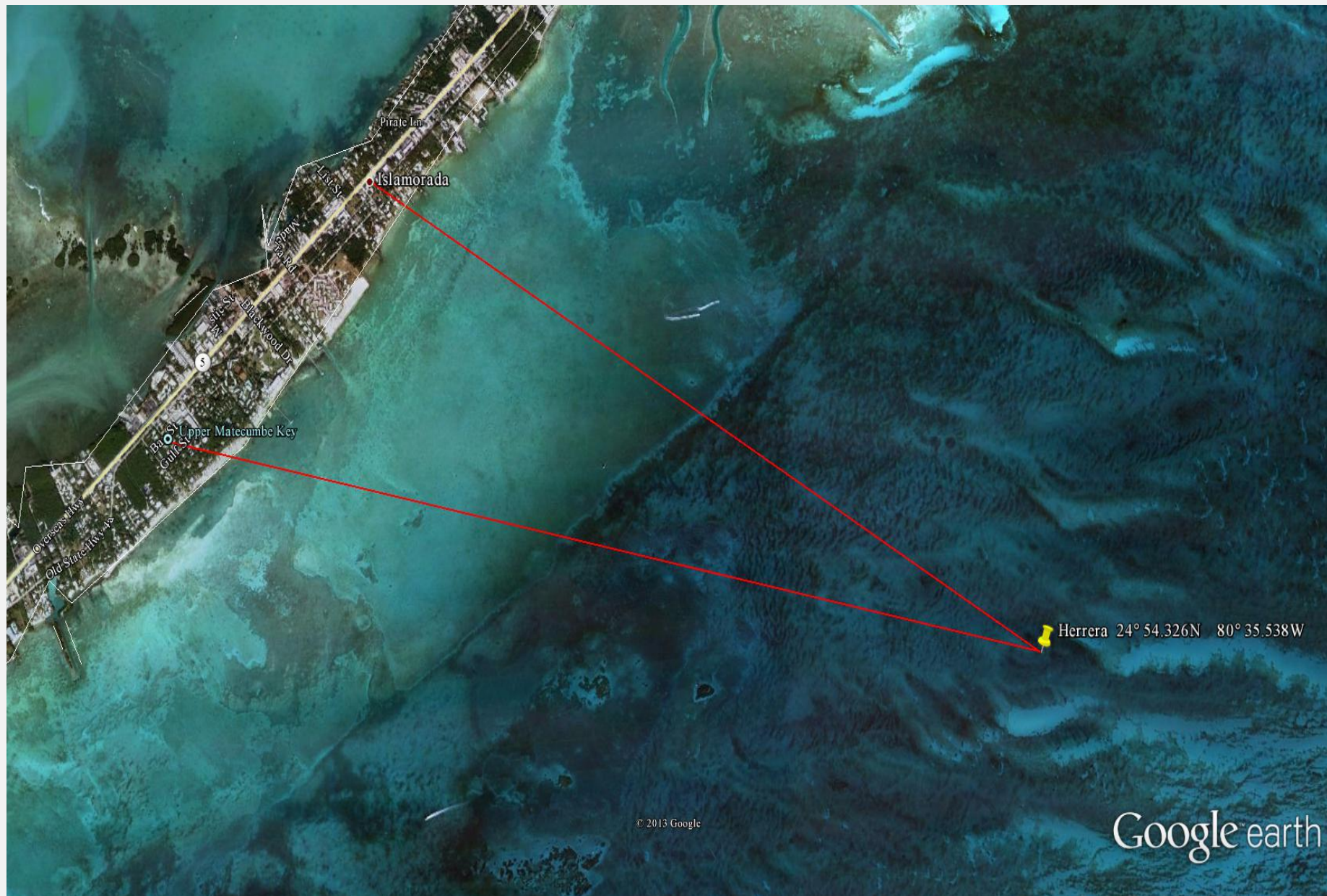
Diving the Herrera Wreck For Spanish Treasure [Website Link](#)

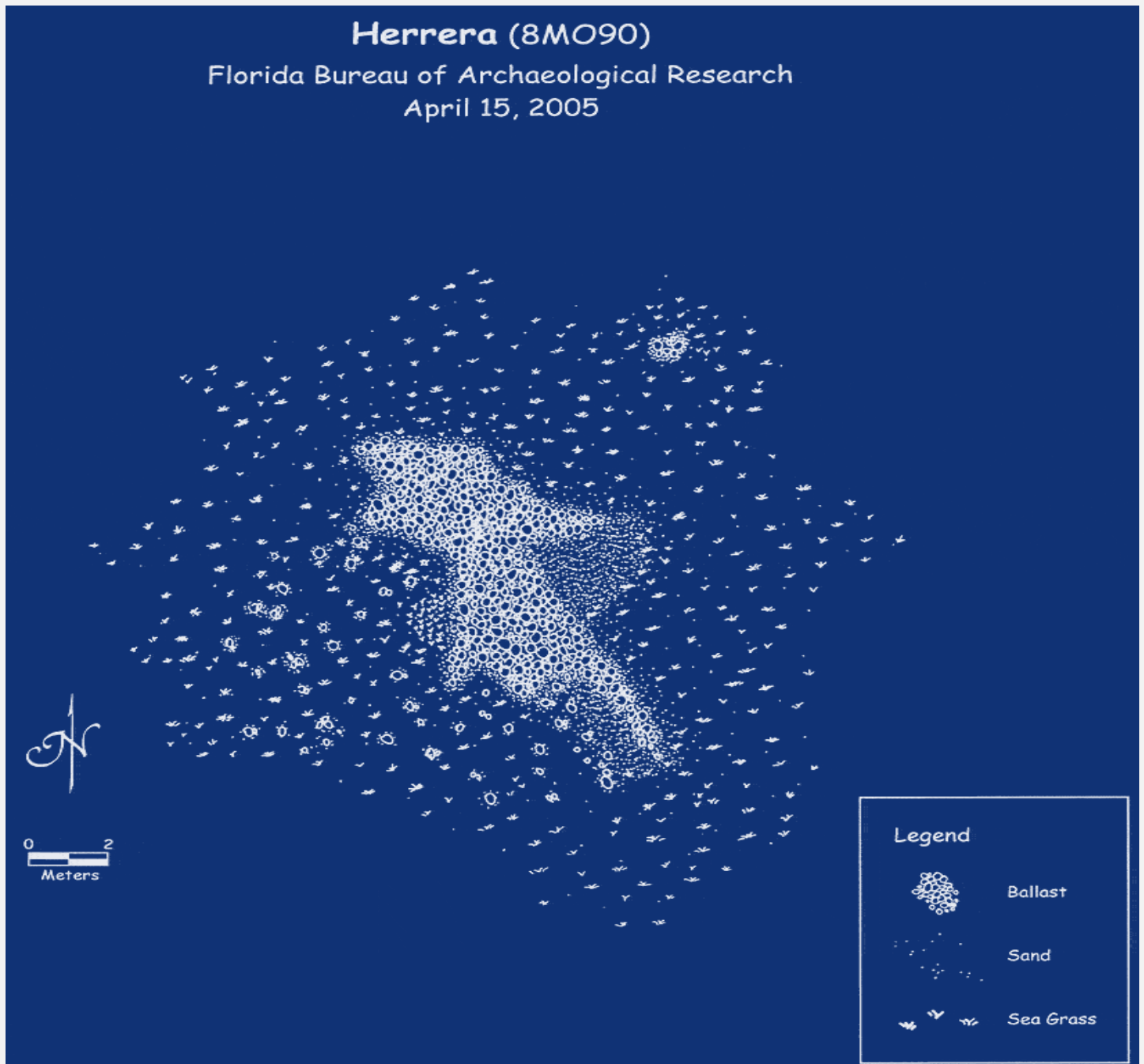
Beach Access:

Hurricane Monument 24 53.364N 80 40.577W - Upper Matcumbe Key



Wreck Site: Herrera 24° 54.326N 80° 35.538W (Yellow Pin)





Florida Keys National Marine Sanctuary in 1990. The removal of artifacts from any of the sites is prohibited today.

- 1 - Always Fill all holes dug since many people use the beach for other recreational purposes.
- 2 - Always remove and carry out all trash dug.
- 3 - Never metal detect the beach dunes and grass area its illegal.
- 4 - Never metal detect in leased waters its illegal.
- 5 - Never Trespass on Private Property without Permission.
- 6 - Never metal detect in National Parks, National Beaches and **the 1733 ship sites in the Keys National Marine Sanctuary** it is illegal.

1733 Fleet Wreck Site Cluster Three Map:

**San Pedro
El Terri, San Felipe, (aka: Lerri, Herri or Tyrri)**



San Pedro

San Pedro Underwater Archaeological Preserve State Park [Web Link](#)

San Pedro Underwater Archaeological Preserve Top Rated Florida Keys Diving Site [Website Link](#)

Vessel Weight: 287 Ton Merchant nao (Dutch Built)

Vessel Manifest:

- + 16,000 pesos in silver specie and bullion
- + Chinese porcelain and the usual cargo
- + sugar, chocolate, indigo, cochineal, dyewood, cocoa, hides, ceramic ware, tobacco, vanilla

Wreck Status: Lies in 18 ft of water.

Wreck GPS Coordinates: 24° 51.802N 80° 40.780W

Wreck Location: Hawk's Channel, off Indian Key One mile south of Indian Key and 1.5 miles from Matcumbe Bight.

Wreck Mileage Marker: #77

Florida Division of Historical Resources [Website Link](#)

Merchant Vessel San Pedro [Website Link](#)

Florida Bureau of Archaeology Diagram [Website Link](#)

Beach Access: 1.5 miles North of Wreck Site

GPS Coordinates: 24 53.093N 80 41.116W Along US #1

Beach Access 24 53.093 80 41.116W



Indian Key,

1733 Plaque -

Plaque for 1513 Ponce de Leon Stopped for Water from the Wells on Lower Matecumbe

24 53.326 80 40.577W, Mileage Marker: #78.5



1733

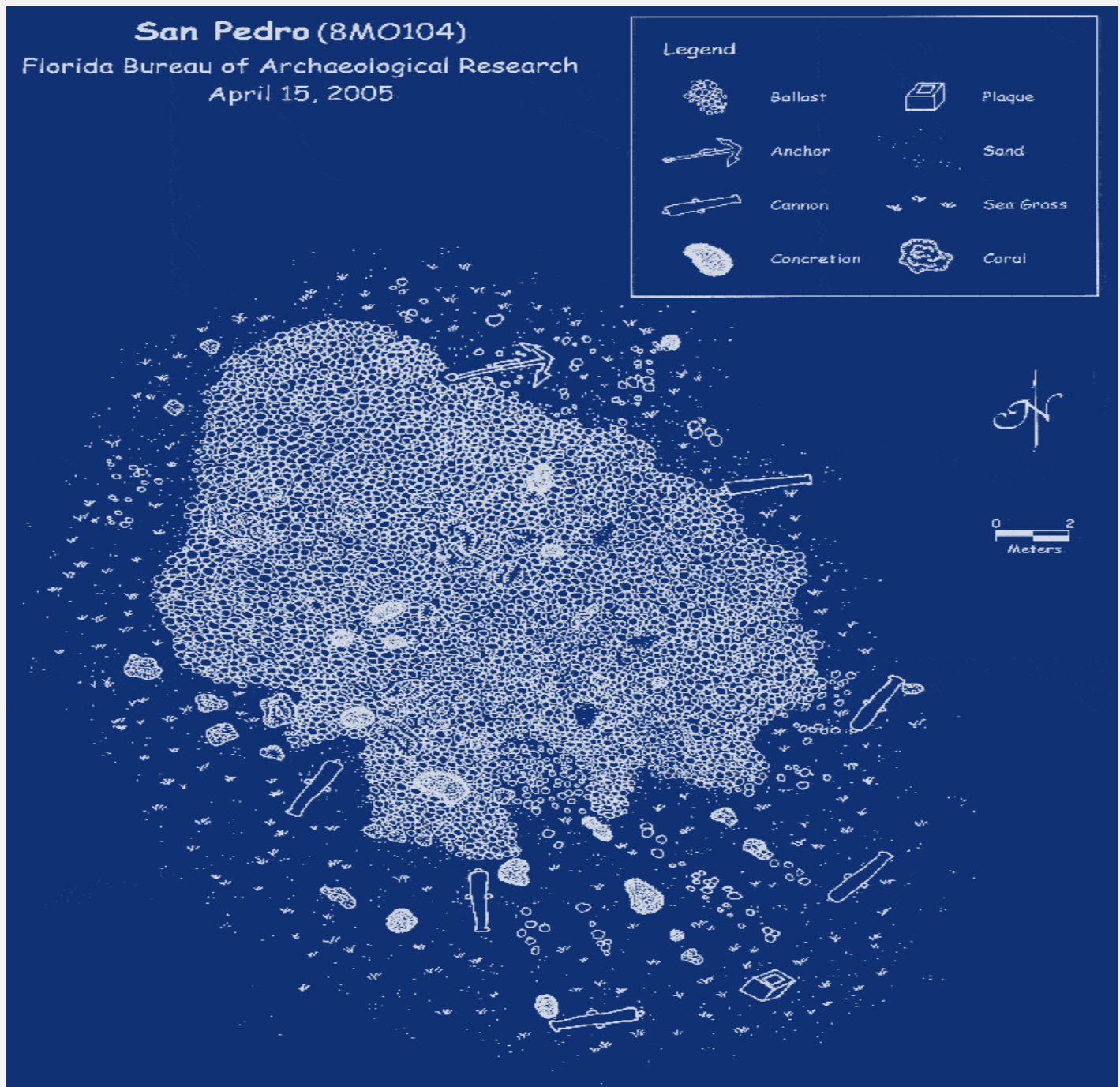


Ponce de Leon



Wreck Site: San Pedro 24° 51.802N 80° 40.780W (Yellow Pin)





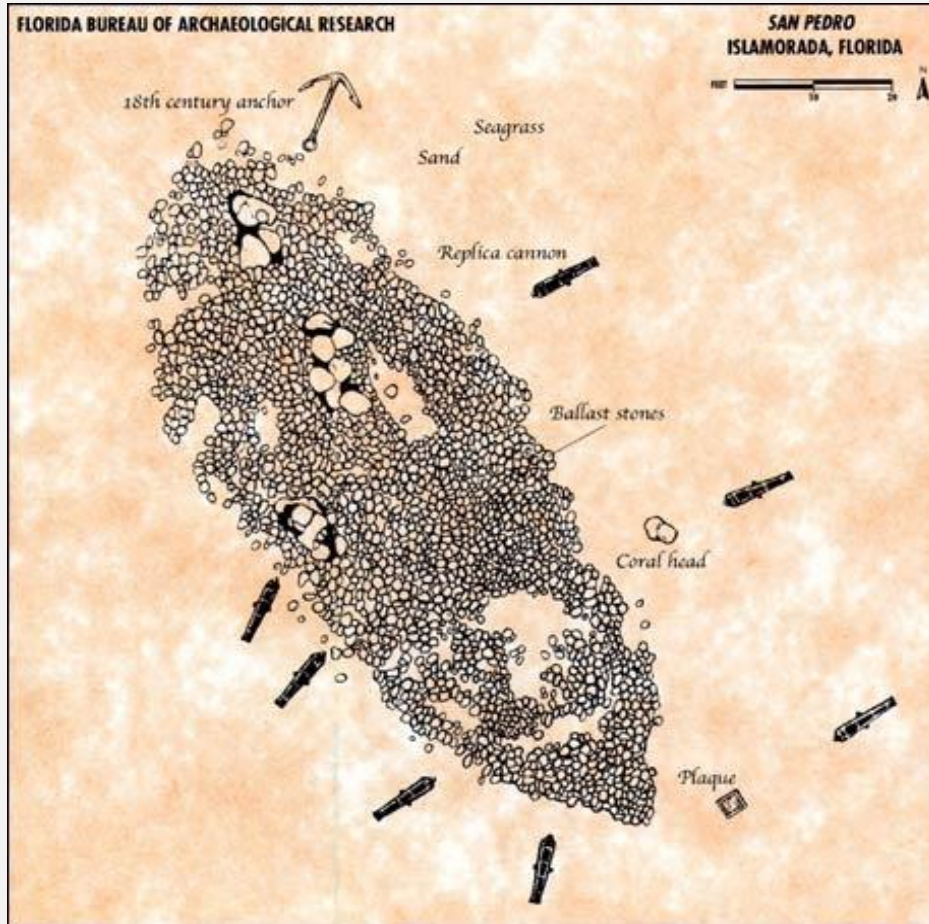
Florida Keys National Marine Sanctuary in 1990. The removal of artifacts from any of the sites is prohibited today.

- 1 - Always Fill all holes dug since many people use the beach for other recreational purposes.
- 2 - Always remove and carry out all trash dug.
- 3 - Never metal detect the beach dunes and grass area its illegal.
- 4 - Never metal detect in leased waters its illegal.
- 5 - Never Trespass on Private Property without Permission.
- 6 - Never metal detect in National Parks, National Beaches and **the 1733 ship sites in the Keys National Marine Sanctuary** it is illegal.

San Pedro Information: On May 31, 2001, the site was added to the U.S. National Register of Historic Places.

San Pedro Underwater Archaeological Preserve State Park [Web Link](#)

San Pedro Underwater Archaeological Preserve Top Rated Florida Keys Diving Site [Web Link](#)



San Felipe, El Terri (also spelled Lerri, Herri or Tyrri)

Vessel Owner: Private

Vessel Weight: 486 Tons (English Built Merchant nao)

Vessel Manifest:

- + 34,000 pesos in silver specie and bullion
- + 326 marcos of worked silver
- + sugar, chocolate, indigo, cochineal, dyewood, cocoa, hides, ceramic ware, tobacco, vanilla

Wreck GPS Coordinates: 24° 50.761N 80° 42.850W

Wreck Location: 1.2 miles east of Lower Matecumbe Key and south of the San Pedro wreck

Wreck Ballast Pile: 100' x 30' in 15 ft of water

Wreck Mileage Marker: # 75

Wreck Status: **El Terri is on the US National Register of Historic Places.**

When Diving Key Largo Plan A Dive Trip To El Lerri Historic Site [Website Link](#)

Florida Division of Historical Resources [Website Link](#)

Merchant Vessel El Lerri [Website Link](#)

Florida Bureau of Archaeology Diagram [Website Link](#)

Information: Silver coins continue to wash up near the beach just ocean side of mile marker 75 face the ocean.

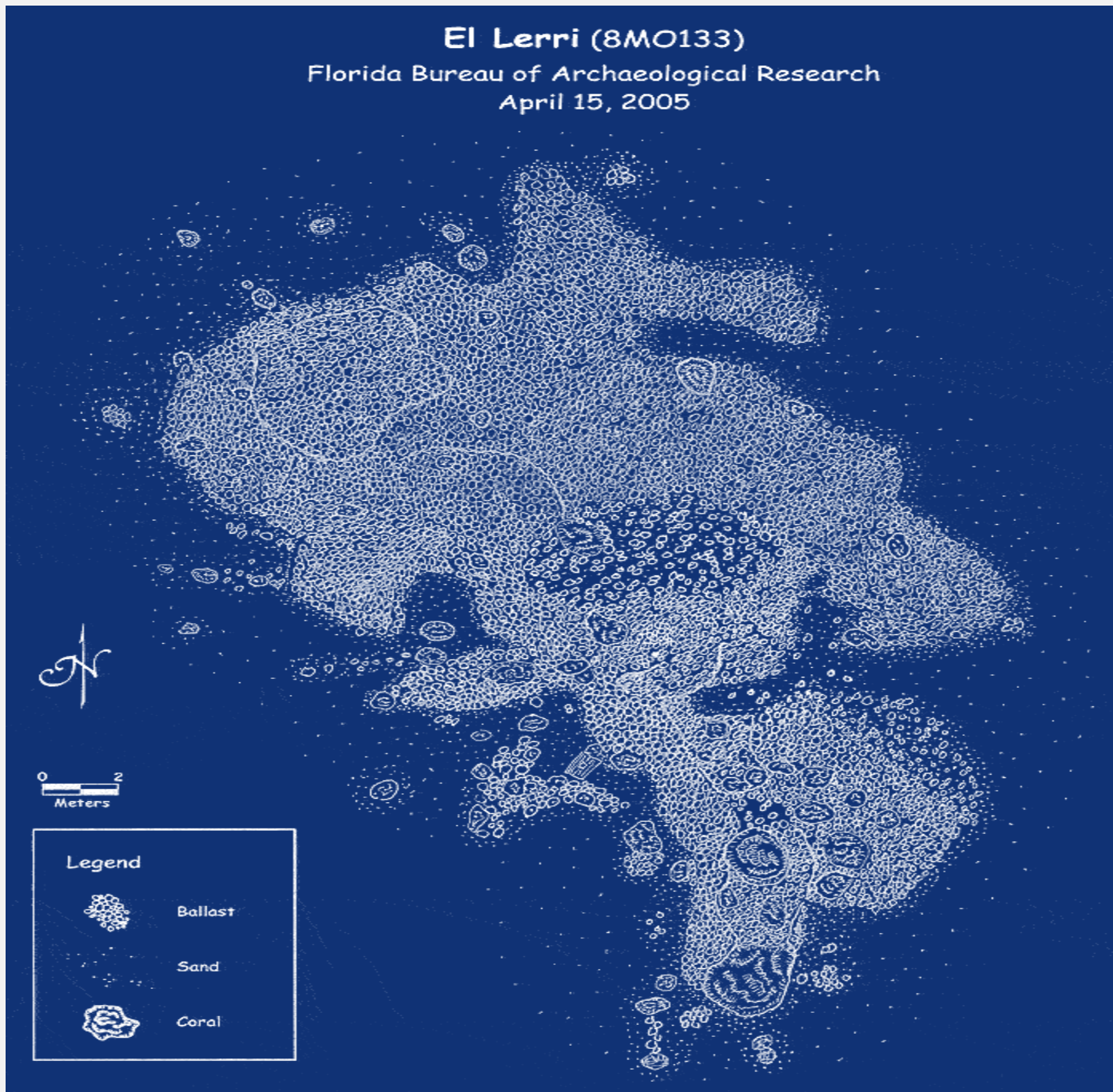
Beach Access: No homes Ocean Side for about a half mile.

Sunset Dr. Residents Only beach access - Just before MM # 74

Sunset Dr. **Residents Only Beach Access** - Just before MM # 74 - GPS Coordinates: 24 51.226N 80 43.870W



Note: **Do Not Access Private Property Without Permission**



Florida Keys National Marine Sanctuary in 1990. The removal of artifacts from any of the sites is prohibited today.

- 1 - Always Fill all holes dug since many people use the beach for other recreational purposes.
- 2 - Always remove and carry out all trash dug.
- 3 - Never metal detect the beach dunes and grass area its illegal.
- 4 - Never metal detect in leased waters its illegal.
- 5 - Never Trespass on Private Property without Permission.
- 6 - Never metal detect in National Parks, National Beaches and **the 1733 ship sites in the Keys National Marine Sanctuary** it is illegal.

1733 Fleet Wreck Site Cluster Four Map:

San Francisco or Craig Wreck or Cayo Vivoras, San Francisco de Asis

El Gallo Indiano , La Almiranta, rear guard of the fleet (aka: Cannonball Wreck) Almiranta Nuestra Senora de Balvaneda

Nuestra Senora de Las Augustias y San Raphael (aka: San Rafael or El Charanguero Grande)

El Sueco de Arizón Nuestra Senora del Rosario San Antonio y San Vicente Ferrer



San Francisco or Craig Wreck or Cayo Vivoras, San Francisco de Asis Nuestra Señora del Rosario San Francisco Javier y San Antonio de Padua

Vessel Owner: Private (Merchant nao)

Vessel Weight: 205+ ton (French Built Merchant Vessel)

Vessel Manifest:

+ 12,000 pesos in silver species and bullion

+ sugar, chocolate, indigo, cochineal, dyewood, cocoa, hides, ceramic ware, tobacco, vanilla

Wreck GPS Coordinates: 24° 49.185N 80° 45.425W

Wreck Location: Lies in 14 feet of water just 1.2 miles off of Craig Key or 2.1 miles from Long Key

Wreck Mileage Marker: # 72

Florida Division of Historical Resources [Website Link](#)

Merchant Vessel San Francisco [Website Link](#)

Florida Bureau of Archaeology Diagram [Website Link](#)

Best Snorkeling In Florida Keys Is At San Francisco Shipwreck [Website Link](#)

Beach Access:

Annies Beach Park - GPS Coordinates: 24 50.935N 80 44.455W



Connects to Annies Beach Park GPS Coordinates: 24 50.795N 80 44.657W
 Beach location two miles from wreck site



Beach Access: Long Key State Park

GPS Coordinates: 24 49.005N 80 49.431W



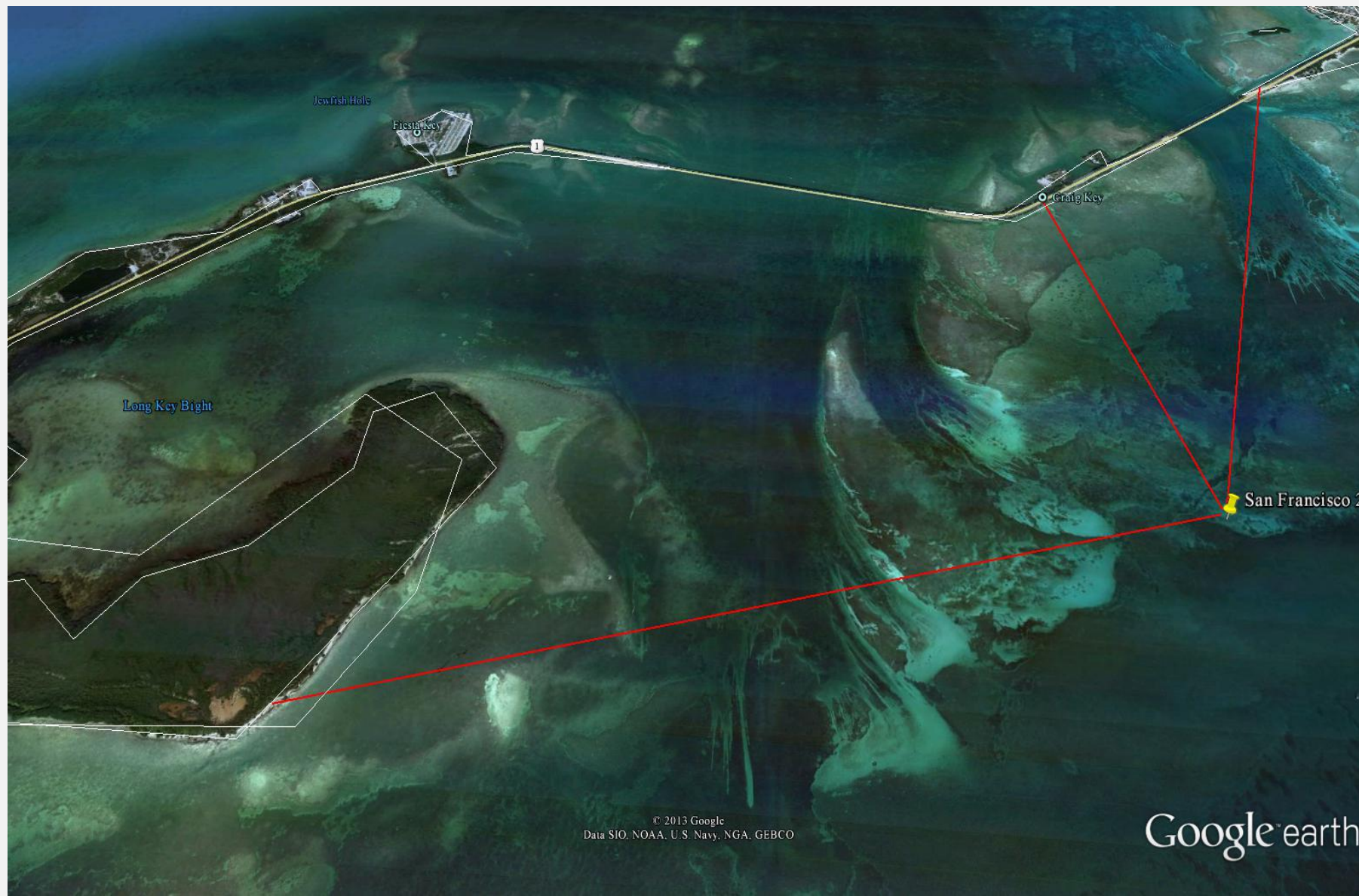
GPS Coordinates: 24 48.941N 80 49.402W

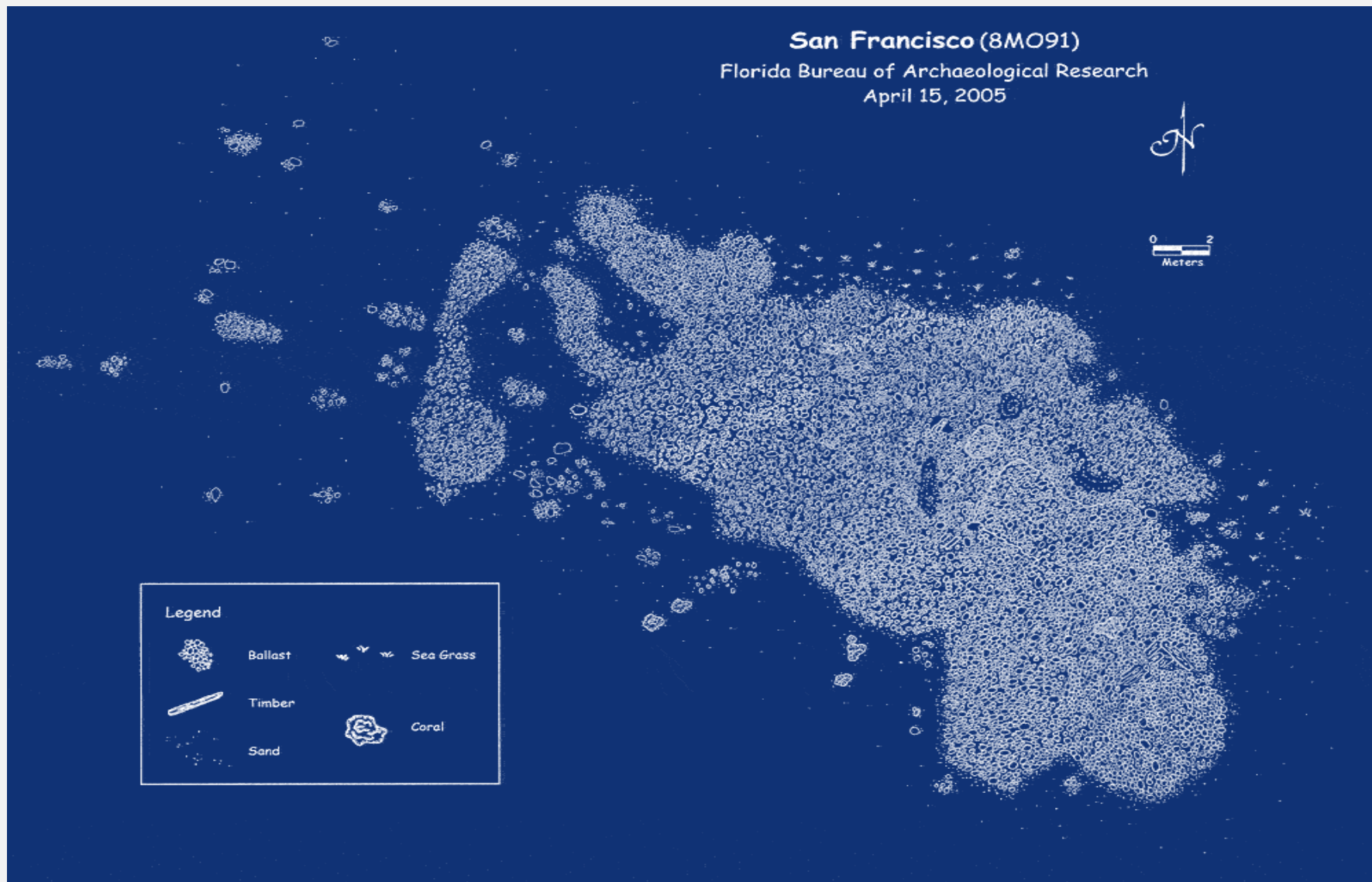


Florida Keys National Marine Sanctuary in 1990. The removal of artifacts from any of the sites is prohibited today.

- 1 - Always Fill all holes dug since many people use the beach for other recreational purposes.
- 2 - Always remove and carry out all trash dug.
- 3 - Never metal detect the beach dunes and grass area its illegal.
- 4 - Never metal detect in leased waters its illegal.
- 5 - Never Trespass on Private Property without Permission.
- 6 - Never metal detect in National Parks, National Beaches and **the 1733 ship sites in the Keys National Marine Sanctuary** it is illegal.

Wreck Site: San Francisco 24° 49.185N 80° 45.425W (Yellow Pin)





El Gallo Indiano , La Almiranta, rear guard of the fleet (aka: Cannonball Wreck) Almiranta Nuestra Senora de Balvaneda

Vessel Owner: King

Vessel Cannon: 60

Vessel Weight: 500 Ton - Galleon

Vessel Manifest: (Property of Private Citizens)	(Kings Property divided between El Gallo & El Rubi)
+ 196 castellanos in worked gold	1,519.527 pesos in silver species and bullion
+ 3.200 pesos in gold specie,	4,110 granos in gold
+ 4,895,216 pesos in silver specie and bullion	unspecified worked gold and silver
+ 2,579 marcos of worked silver	copper ingots
+ 285 marcos of "plata pasta"	
+ property of private citizens	

Wreck GPS Coordinates: 24'48.633N 80'45.932W

Wreck Location: Lies in shallow water between Lower Matecumbe and 1.7 miles from Long Key and 1.8 miles South of Craig key

Wreck Mileage Marker: # 72

Information: This is NOT a Sanctuary Preservation Area.

Florida Division of Historical Resources [Website Link](#)

Galleon Almiranta [Website Link](#)

Florida Bureau of Archaeology Diagram [Website Link](#)

Diving At Almiranta El Gallo Indiano [Website Link](#)

Beach Access: Long Key State Park

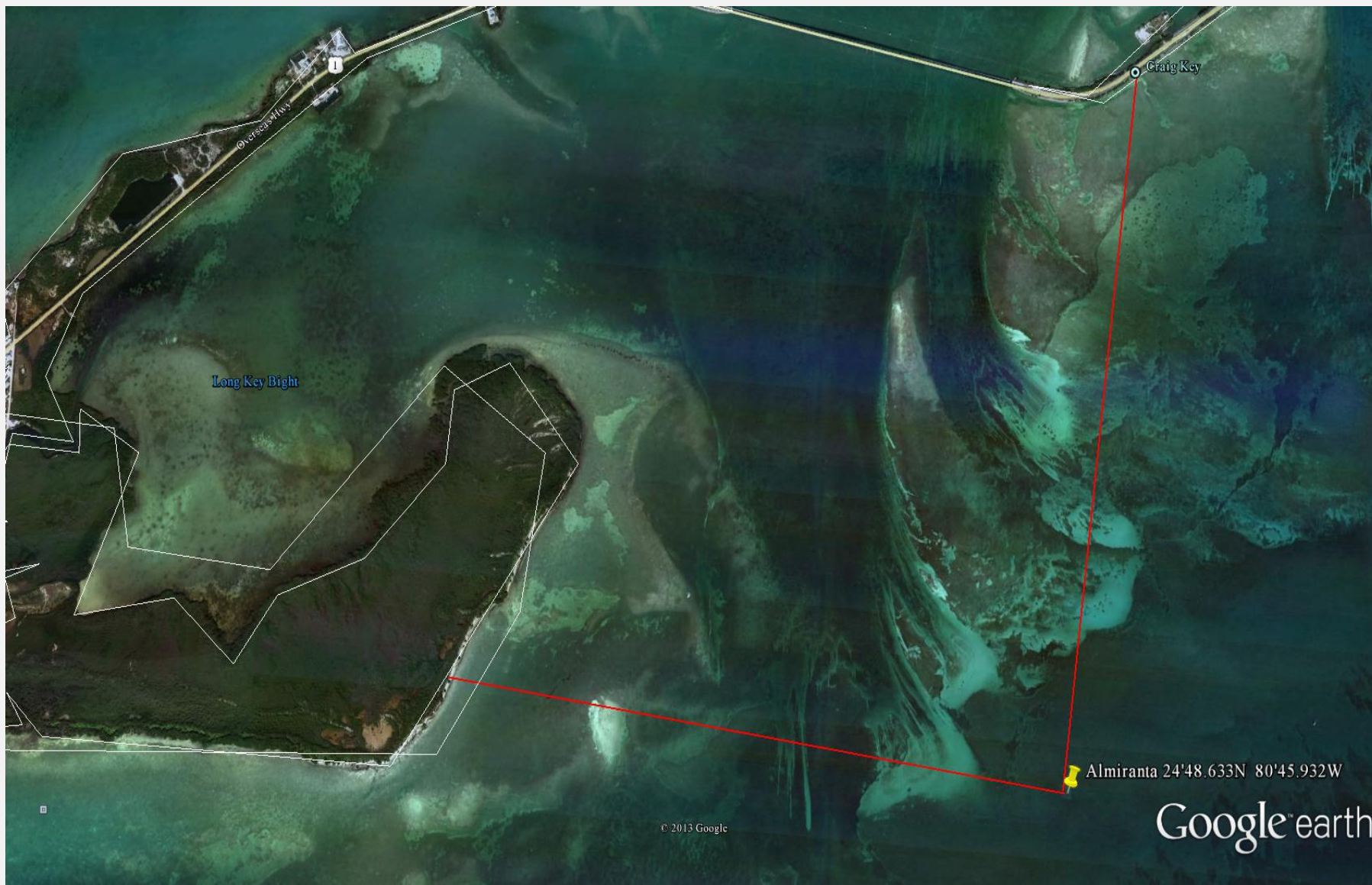
GPS Coordinates: 24 49.005N 80 49.431W

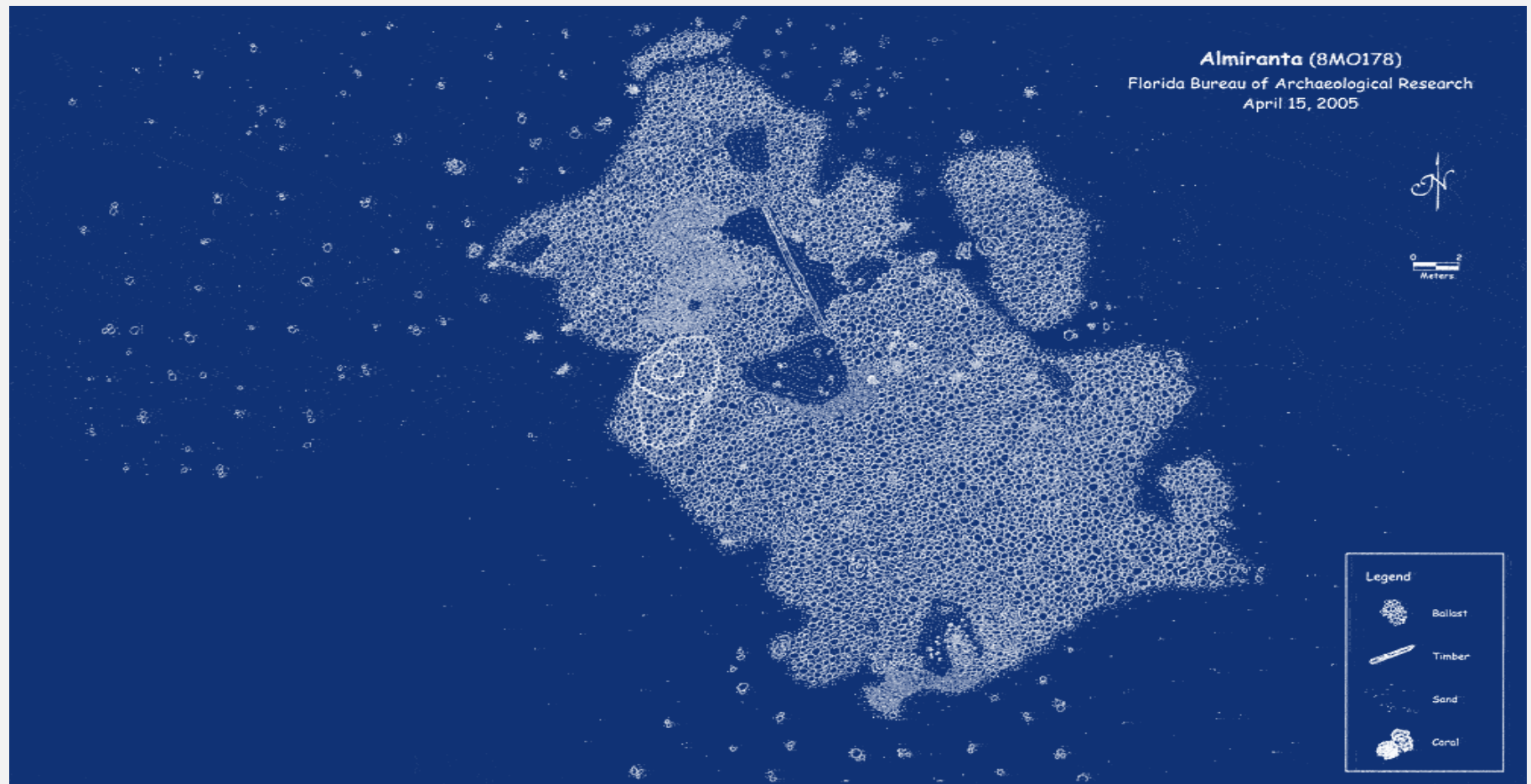


GPS Coordinates: 24 48.941N 80 49.402W



Wreck Site: Almiranta 24'48.633N 80'45.932W (Yellow Pin)





Florida Keys National Marine Sanctuary in 1990. The removal of artifacts from any of the sites is prohibited today.

- 1 - Always Fill all holes dug since many people use the beach for other recreational purposes.
- 2 - Always remove and carry out all trash dug.
- 3 - Never metal detect the beach dunes and grass area its illegal.
- 4 - Never metal detect in leased waters its illegal.
- 5 - Never Trespass on Private Property without Permission.
- 6 - Never metal detect in National Parks, National Beaches and **the 1733 ship sites in the Keys National Marine Sanctuary** it is illegal.

Nuestra Senora de Las Augustias y San Raphael (aka: San Rafael or El Charanguero Grande)

Vessel Owner: Private

Vessel Cannon: four

Vessel Weight: 328 Ton Merchant nao

Vessel Manifest:

- + 27,000 pesos in silver specie and bullion
- + 605 marcos of worked silver
- + sugar, chocolate, indigo, cochineal, dyewood, cocoa, hides, ceramic ware, tobacco, vanilla
- + Chinese porcelain,

Wreck GPS Coordinates: 24° 47.455N 80° 51.738W

Wreck Location: Lies in 14 feet of water at Long Key Channel, one half mile south of the viaduct bridge

Wreck Ballast Pile: 95 feet long and four feet high

Wreck Mileage Marker: # 65

Florida Division of Historical Resources [Website Link](#)

Merchant Vessel Angustias [Website Link](#)

Florida Bureau of Archaeology Diagram [Website Link](#)

Florida Keys National Marine Sanctuary in 1990. The removal of artifacts from any of the sites is prohibited today.

- 1 - Always Fill all holes dug since many people use the beach for other recreational purposes.
- 2 - Always remove and carry out all trash dug.
- 3 - Never metal detect the beach dunes and grass area its illegal.
- 4 - Never metal detect in leased waters its illegal.
- 5 - Never Trespass on Private Property without Permission.
- 6 - Never metal detect in National Parks, National Beaches and **the 1733 ship sites in the Keys National Marine Sanctuary** it is illegal.

Beach Access: On the Southwest corner of Long Key is a Public Beach Access point with parking 1.2 miles from the Las Augustias, 1733 shipwreck. (See Photo Below) Parking available along US # 1.
GPS Coordinates: 24 48.235N 80 50.895W

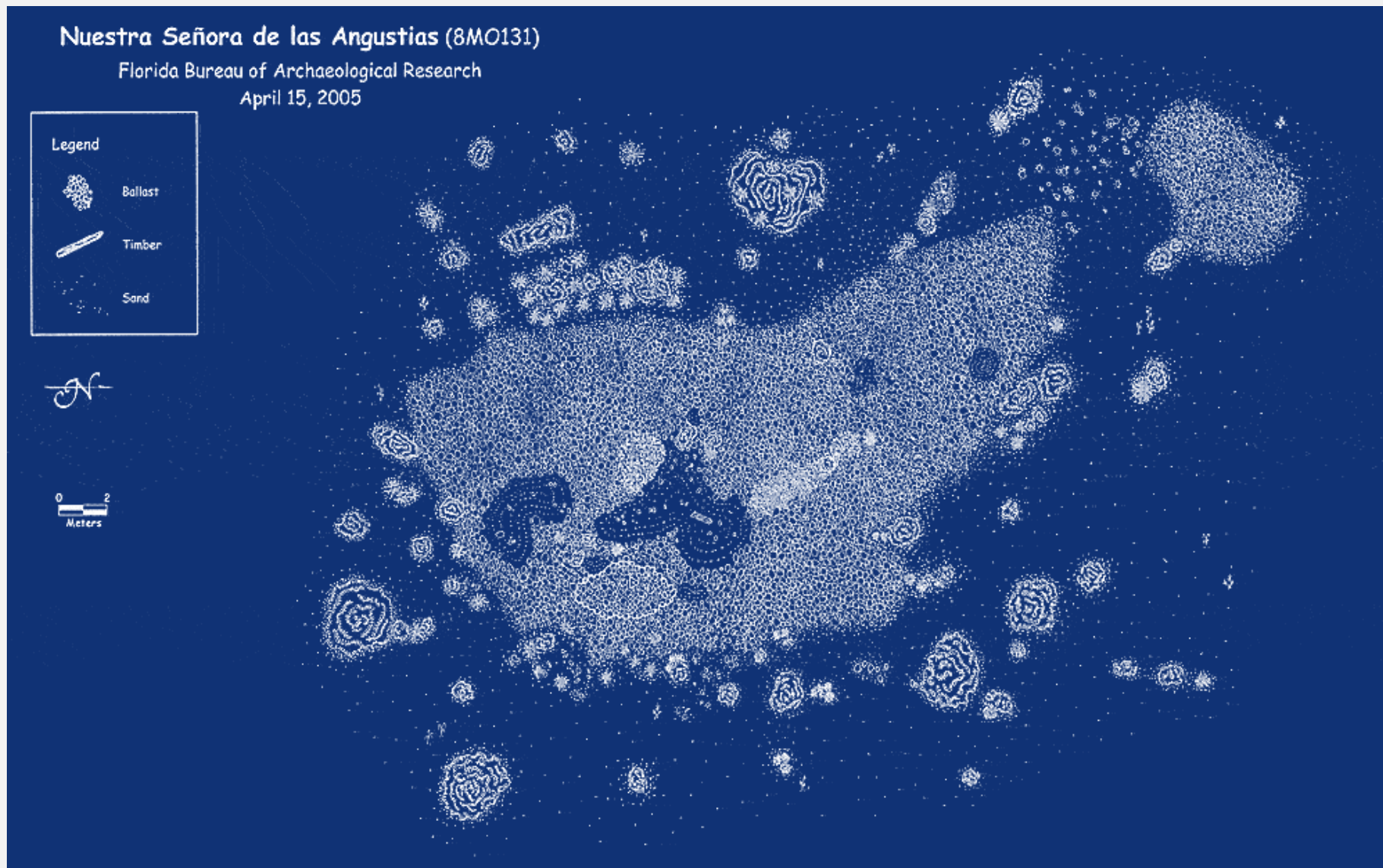


Conch Key Beach Access GPS Coordinates: 24 47.449N 80 53.103W, wreck site is 1.3 miles



Wreck Site: Augustias 24° 47.455N 80° 51.738W (Yellow Pin)





El Sueco de Arizón Nuestra Senora del Rosario San Antonio y San Vicente Ferrer

Vessel Owner: Private Merchant nao

Vessel Manifest:

- + 24,000 pesos in silver specie and bullion
- + tinta which could be coffee or dye
- + sugar, chocolate, indigo, cochineal, dyewood, cocoa, hides, ceramic ware, tobacco, vanilla

Wreck GPS Coordinates: Site #1 24° 46.625N 80° 53.372W Site #2 24° 46.728N 80° 53.480W

Wreck Location: Lies in 9 to 14 feet of water ~4,000 feet offshore between Conch Key and Walker Island

Wreck Mileage Marker: # 62 - 63

Florida Division of Historical Resources [Website Link](#)

Merchant Vessel Sueco [Website Link](#)

Florida Bureau of Archaeology Diagram [Website Link](#)

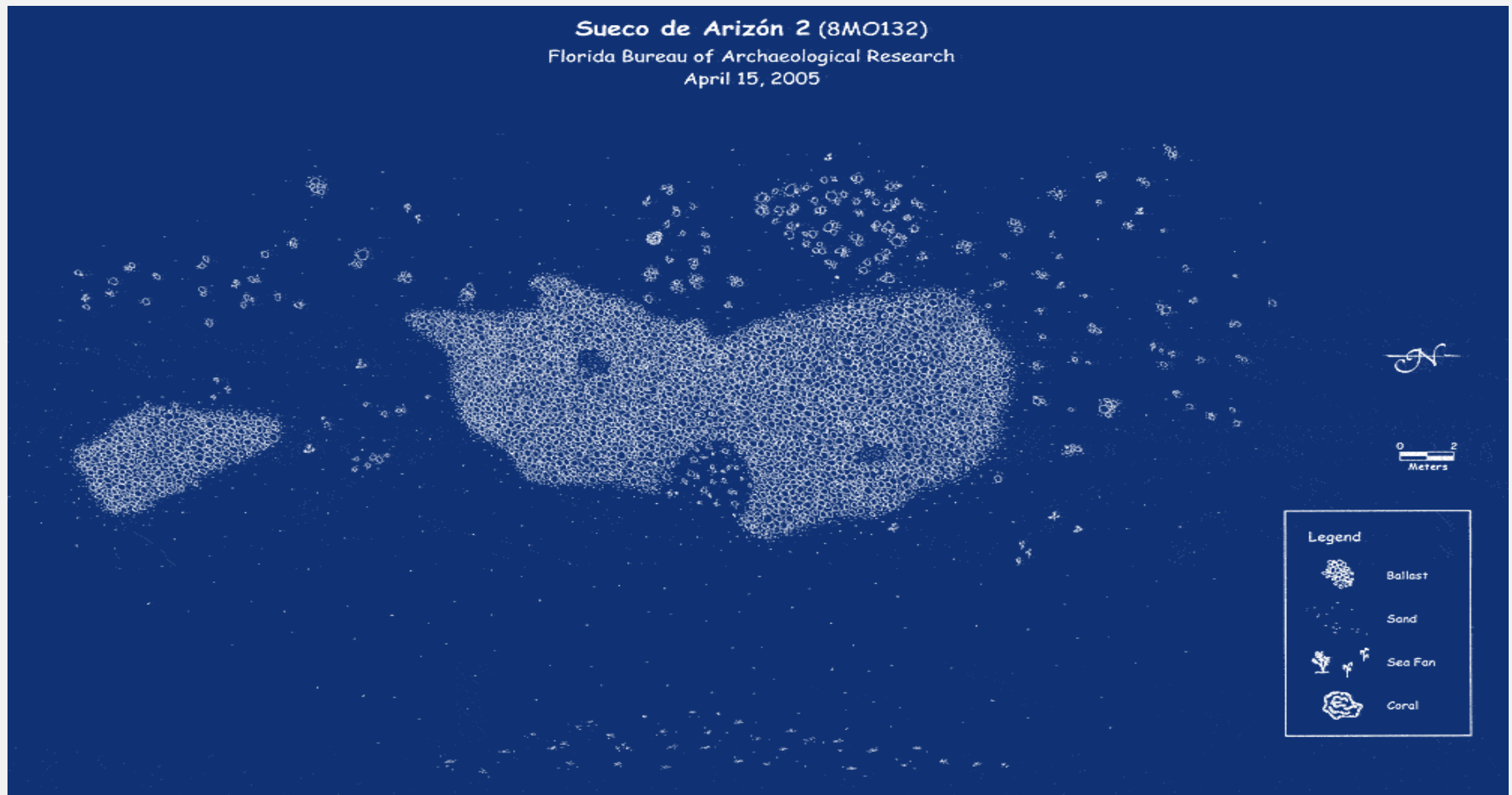
Beach Access: There is no Public Beach Access on Conch Key or Walkers Island to the offshore El Sueco 1733 Fleet Shipwreck. Duck Island: No Public Beach Access, Water Canal around the island.

Walker Island: **Conch Key Cottages Private, Permit Required**



Wreck Site: Sueco 24° 46.625N 80° 53.372W (Yellow Pin)





Florida Keys National Marine Sanctuary in 1990. The removal of artifacts from any of the sites is prohibited today.

- 1 - Always Fill all holes dug since many people use the beach for other recreational purposes.
- 2 - Always remove and carry out all trash dug.
- 3 - Never metal detect the beach dunes and grass area its illegal.
- 4 - Never metal detect in leased waters its illegal.
- 5 - Never Trespass on Private Property without Permission.
- 6 - Never metal detect in National Parks, National Beaches and **the 1733 ship sites in the Keys National Marine Sanctuary** it is illegal.

May Not be the Correct Wreck Name for this Site**San Ignacio
Sumey de San Ignacio****Vessel Owner:** Private**Vessel Weight:** 292+ Ton (English Built Merchant nao)**Vessel Manifest:**

- + 12,000 pesos in silver specie and bullion,
- + 696 marcos of worked silver in six boxes
- + sugar, chocolate, indigo, cochineal, dyewood, cocoa, hides, ceramic ware, tobacco, vanilla
- + boxes containing gifts from China

Wreck GPS Coordinates: 24 41.70N 80 56.44W**Wreck Information:** This San Ignacio, is believed to be the source of silver coins some gold coins found in recent years and is the most southwestern of all the known 1733-Fleet wreck sites.**Wreck Location:** 5.2 miles from Key Colony Beach**Wreck Mileage Marker:** # 57**Beach Access:** The only serious Public Beach access at Little Crawl Key is at 56200 Overseas Highway Curry Hammock State Park: 24 44.792N 80 58.957W Park Entrance: 24 44.791N 80 58.956W 3.9 miles to wreck site.

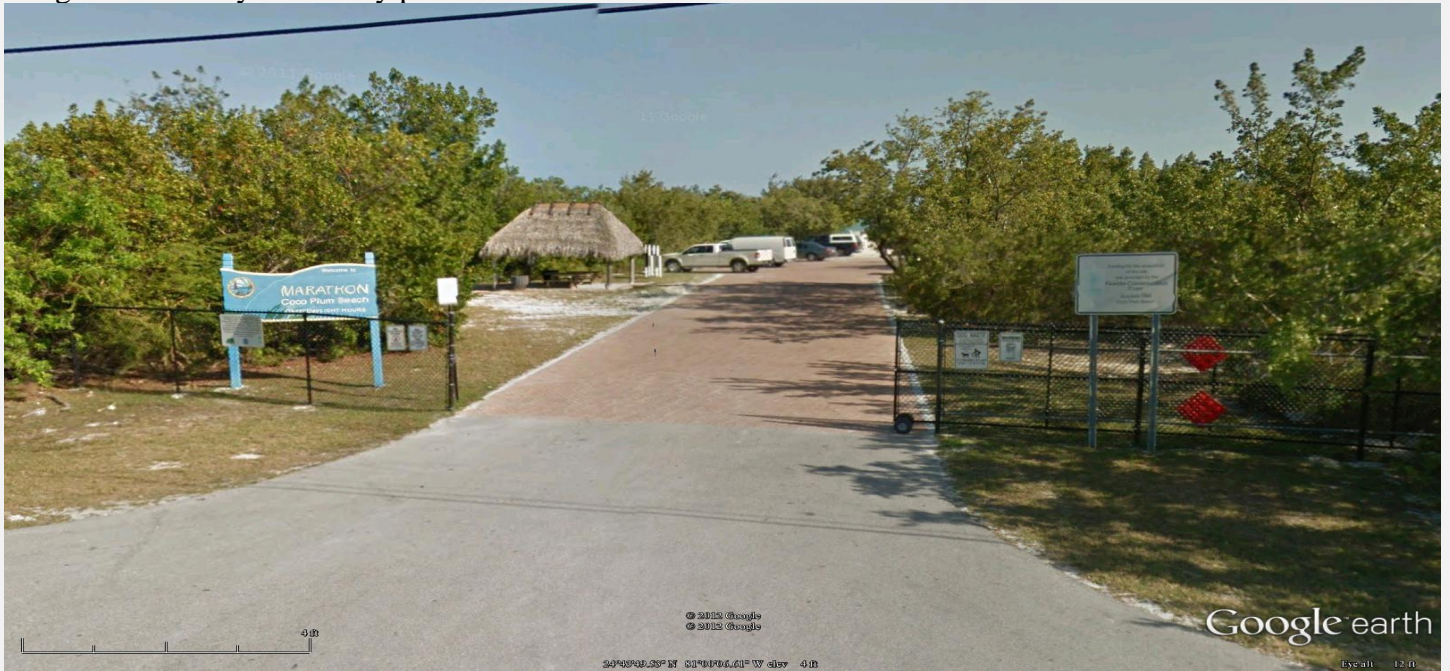
Florida Keys National Marine Sanctuary in 1990. The removal of artifacts from any of the sites is prohibited today.

- 1 - Always Fill all holes dug since many people use the beach for other recreational purposes.
- 2 - Always remove and carry out all trash dug.
- 3 - Never metal detect the beach dunes and grass area its illegal.
- 4 - Never metal detect in leased waters its illegal.
- 5 - Never Trespass on Private Property without Permission.
- 6 - Never metal detect in National Parks, National Beaches and **the 1733 ship sites in the Keys National Marine Sanctuary** it is illegal.

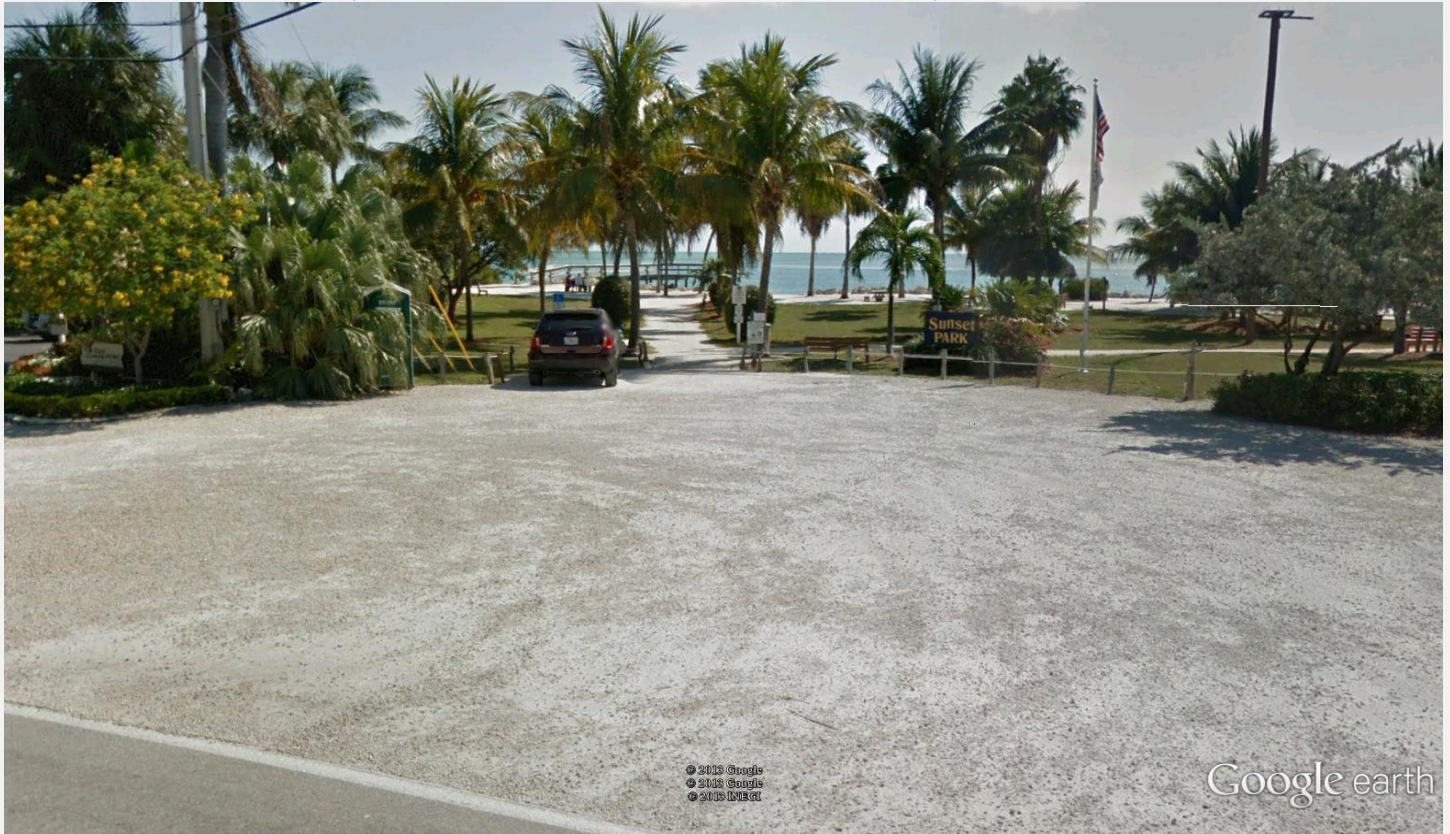
San Ignacio Continued

Marathon Coco Plum Beach Public Access on Coco Plum Drive 24 44.080N 81 0'6.90"W - Plum Coco Drive and Ocean Seas Highway

Long narrow sandy beach city park. GPS Coordinates: 24 43.827N 81 00.112W 4.6 miles to wreck site.



Beach Access: Sunset Park, GPS coordinates: 24 43.088N 81 01.485W, 12th St. and West Ocean Dr



San Ignacio Continued

Beach Access Park Tingler Island, GPS Coordinates: 24 41.498N 81 5.079W

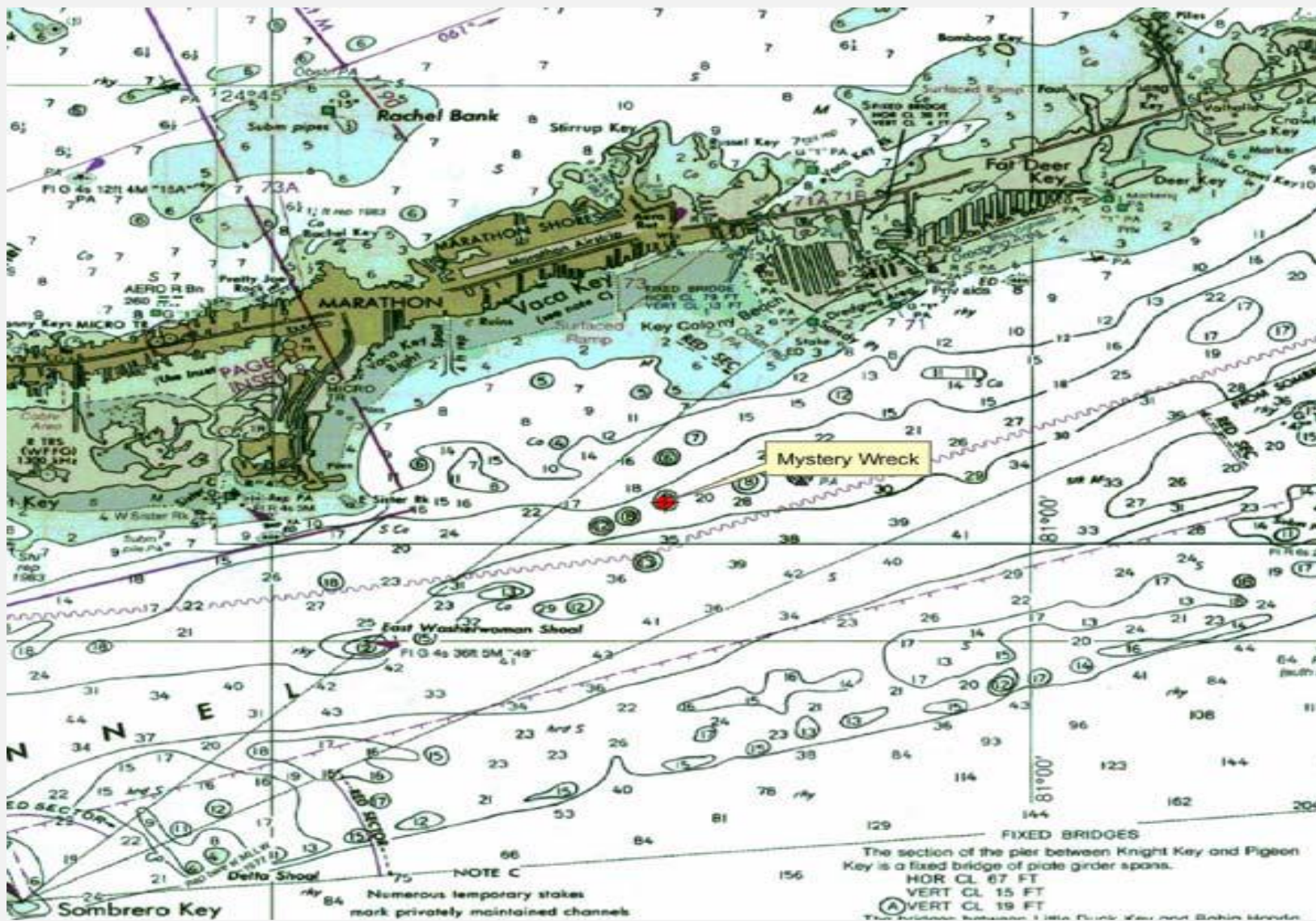


Wreck Site: Ignacio 24 41.70N 80 56.44W (Yellow Pin)



San Ignacio

2004 - Archaeological and Biological Examination of “The Mystery Wreck” (8MO143) off Vaca Key, Monroe County, Florida by Roger C. Smith, Della Scott-Ireton, Jennifer McKinnon, Stephen Beckwith, Brenda Altmeier, and Lauri MacLaughlin [Website .pdf file](#)



Appendix A**1733 Ship Wreck Sites Not Found**

San Fernando
Nuestra Senora de Los Reyes, San Fernando y San Francisco
de Paula

Vessel Owner: Private

Vessel Weight: 328 Ton (Genovese Built Merchant nao)

Vessel Manifest:

+ 16,000 pesos in silver specie and/or bullion
+ 226 marcos worked silver
+ sugar, chocolate, indigo, cochineal, dyewood, cocoa, hides,
ceramic ware, tobacco, vanilla

Wreck Location: but is believed to be near Duck Key or Grassy
Key at Cayo de Viboras out near Coffins Patch.

Wreck Status: Sunk but not found

Wreck GPS Coordinates: Unknown

El Floridana, aka: (Freata de Florida, Fragata Situada)

Vessel Type: Supply Ship

Vessel Manifest:

+ Payload for troops
+ Food supplies
+ Building materials

Vessel Location: Unknown

Vessel Status: Sunk but not found

Wreck GPS Coordinates: Unknown

Vessel Status: Refitted and Sailed back to Havana

Appendix A

1733 Ship Wreck Sites Not Found

-----\

Nuestra Senora del Rosario y Santo Domingo (Murgie)

Vessel Owner: Private (Husband and Wife)

Vessel Weight: 522 Tons Merchant Vessel (Spanish Built)

Vessel Manifest:

- + 31281 pesos in silver specie and bullion
- + 495 marcos in worked silver
- + sugar, chocolate, indigo, cochineal, dyewood, cocoa, hides, ceramic ware, tobacco, vanilla

Vessel Status: Refitted and sailed back to Havana

El Gran Poder de Dios y Santa Ana, aka: (Poder)

Vessel Owner: Private Merchant Vessel

Vessel Weight: 182 Tons (Build in Hamburg, Germany)

Vessel Manifest:

- + 14,000 pesos in silver specie and bullion
- + 139 marcos in worked silver
- + sugar, chocolate, indigo, cochineal, dyewood, cocoa, hides, ceramic ware, tobacco, vanilla

Vessel Status: Refitted with a mast and sailed back to Havana

El Balandrita, aka: (la balandra)

Vessel Manifest:

- + 256 barrels of flour

Vessel Status: Refitted and sailed back to Havana

Appendix A

1733 Ship Sailed Onto Cadiz

Nuestra Señora del Rosario, San Francisco Javier y San Antonio de Padua

Vessel Owner: Private

Vessel Weight: 205 Tons (French Built Merchant Vessel)

Vessel Manifest:

+12,000 pesos in silver specie and bullion
+ sugar, chocolate, indigo, cochineal, dyewood, cocoa, hides, ceramic ware, tobacco, vanilla,

Vessel Status: Survived the hurricane sailed on to Cadiz

El Africa, Senor San Joseph

Vessel Cannon: 60 Galleon

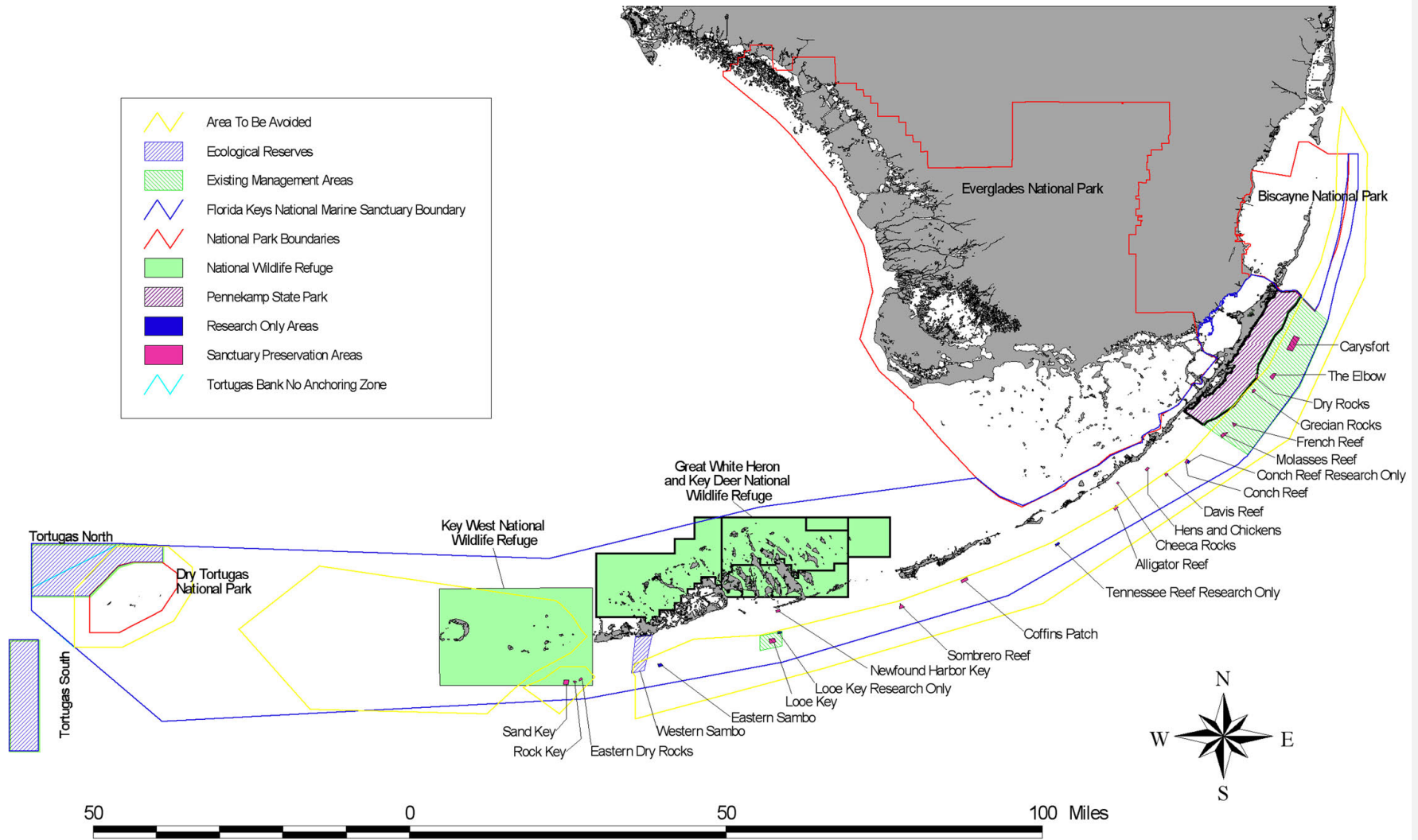
Vessel Manifest:

+ No Treasure
+ Tobacco

Vessel Status: Survived the hurricane sailed on to Cadiz

Appendix B: Florida Keys National Marine Sanctuary Website: <http://floridakeys.noaa.gov/>

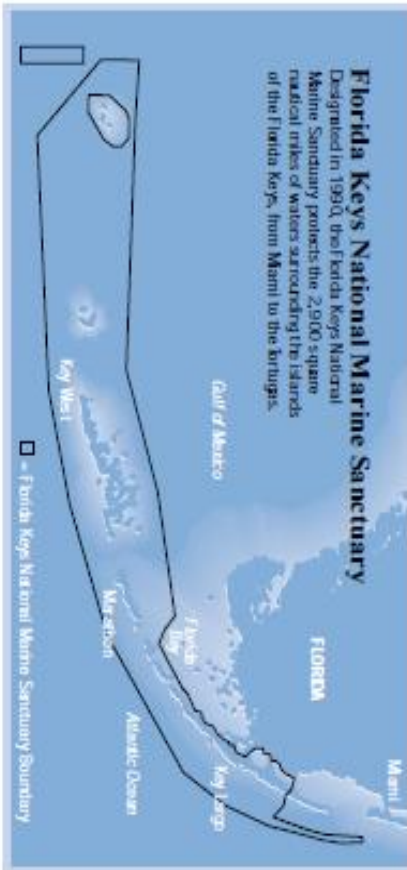
Florida Keys National Marine Sanctuary



Appendix B: Florida Keys National Marine Sanctuary <http://mcbi.marine-conservation.org/> Regulation: <http://floridakeys.noaa.gov/>
Page 2 of 4

SANCTUARY REGULATIONS

This summary is only intended as a general reference to Sanctuary regulations. These regulations have been separated into those that apply throughout the Sanctuary and those that apply to specific Sanctuary zones. The text of the Sanctuary regulations can be found at 15 CFR 922 Subpart P and should be referred to for more specific information. A copy can be obtained by calling any Sanctuary office or on the Sanctuary web site at www.floridakeys.noaa.gov.



Florida Keys National Marine Sanctuary
Upper Region Office: (305) 852-7717
Marathon Office: (305) 743-2437
Lower Region Office: (305) 292-0311
<http://floridakeys.noaa.gov>



Florida Keys National Marine Sanctuary
Summary of Regulations

THE NATIONAL MARINE SANCTUARY SYSTEM

The National Marine Sanctuary Program serves as the trustee for a system of thirteen underwater parks, encompassing 18,000 square miles of marine and Great Lakes waters. The Program is part of the National Oceanic and Atmospheric Administration (NOAA) that manages national marine sanctuaries by working cooperatively with the public to balance enjoyment and use with long-term conservation. Increasing public awareness of our marine heritage, scientific research, monitoring, exploration, educational programs, and outreach are just a few of the ways the National Marine Sanctuary Program fulfills its mission to the American people.

FLORIDA KEYS NATIONAL MARINE SANCTUARY

North America's only coral barrier reef and the third longest barrier reef in the world lies about six miles seaward of the Florida Keys, a 220-mile long string of islands extending south and west of the Florida mainland. In recognition of the significance of the coral reef ecosystem, the Florida Keys National Marine Sanctuary was created in 1990, extending 2,800 square nautical miles on both sides of the Florida Keys. In 2001, the boundary was increased to 2,900 square nautical miles with the addition of the Tortugas Ecological Reserve. Management in these state and federal waters is achieved through a cooperative agreement with the State of Florida.

Note: There are other existing State and Federal laws regarding fishing and vessel discharges that apply in the Sanctuary.

State fisheries regulations available from:
Florida Fish and Wildlife Conservation Commission
1-888-404-3922 or www.floridaconservation.org

Federal fisheries regulations available from:
Gulf of Mexico Fishery Management Council
1-888-833-1844 or www.gulfcouncil.org

South Atlantic Fishery Management Council
(843) 571-4366 or www.safmc.net

National Marine Fisheries Service - Southeast Region
(727) 570-5333 or <http://caldera.sero.nmfs.gov/>

"No discharge zone" regulations may be obtained from the Florida Keys National Marine Sanctuary.

Photo: Larry Lipsky



Appendix B: Florida Keys National Marine Sanctuary <http://mcbi.marine-conservation.org/> Regulation: <http://floridakeys.noaa.gov/>

With certain exceptions, the following activities are prohibited Sanctuary-Wide:

- Removing, injuring, or possessing coral or live rock.
- Discharging or depositing trash or other pollutants.
- Dredging, drilling, prop dredging or otherwise altering the seabed, or placing or abandoning any structure on the seabed.
- Operating a vessel in such a manner as to strike or otherwise injure coral, seagrass, or other immobile organisms attached to the seabed, or cause prop scarring.
- Having a vessel anchored on living coral in water less than 40 feet deep when the bottom can be seen. Anchoring on hardbottom is allowed.
- Except in officially marked channels, operating a vessel at more than 4 knots/no wake within 100 yards of residential shorelines, stationary vessels, or navigational aids marking reefs.
- Operating a vessel at more than 4 knots/no wake within 100 feet of a "divers down" flag.
- Diving or snorkeling without a dive flag.
- Operating a vessel in such a manner which endangers life, limb, marine resources, or property.
- Releasing exotic species.
- Damaging or removing markers, mooring buoys, scientific equipment, boundary buoys, and trap buoys.
- Moving, removing, injuring, or possessing historical resources.
- Taking or possessing protected wildlife.
- Using or possessing explosives or electrical charges.
- Harvesting, possessing or landing any marine life species except as allowed by the Florida Fish and Wildlife Conservation Commission Rule (68B-46 F.A.C.).

Sanctuary Regulations by Zone

With certain exceptions, the following activities are prohibited in the Ecological Reserves (ERs) and Sanctuary Preservation Areas (SPAs):

- Discharging any matter except cooling water or engine exhaust.

- Fishing by any means; removing, harvesting, or possessing any marine life. Catch and release fishing by trolling is allowed in Conch Reef, Alligator Reef, Sombrero Reef, and Sand Key SPAs only.
- Touching or standing on living or dead coral.
- Anchoring on living or dead coral, or any attached organism.
- Anchoring when a mooring buoy is available.
- Bait fishing is allowed in SPAs by FKNMS permit.

Additional regulations for Tortugas South ER:

- Vessels may only enter if they remain in continuous transit with fishing gear stowed. (Diving and snorkeling are prohibited.)

Additional regulations for Tortugas North ER:

- Access permit required to stop or use a mooring buoy.
- Anchoring is prohibited.
- Mooring by vessel(s) more than 100 feet in total or combined length overall is prohibited.
- No access permit necessary if vessel remains in continuous transit with fishing gear stowed.

Special-use Research Only Areas:

- No entry or activities without a FKNMS permit.

Wildlife Management Areas (WMAs):

- Public access restrictions in these areas include idle speed only/no wake, no access buffer, no motor, and limited closures, and are marked as such.

Existing Management Areas (EMAs):

- Check with the appropriate State or Federal agency for applicable rules and regulations that apply in these areas.

Activities prohibited in the Key Largo and Looe Key Existing Management Areas:

- Removing, taking, spearing, or otherwise damaging any coral, marine invertebrate, plant, soil, rock, or other material. However, commercial taking of spiny lobster and stone crab by trap and recreational taking of spiny lobster by hand or hand gear consistent with applicable State and Federal fishery

- regulations are allowed.
- Spearfishing.
- Possession of spearfishing equipment, except while passing through without interruption.

WHAT ARE THE ZONES?

Ecological Reserves (ERs) are designed to encompass large, contiguous diverse habitats. They are intended to provide natural spawning, nursery, and permanent residence areas for the replenishment and genetic protection of marine life and to protect and preserve all habitats and species particularly those not protected by fishery management regulations.

Sanctuary Preservation Areas (SPAs) focus on the protection of shallow, heavily used reefs where conflicts occur between user groups, and where concentrated visitor activity leads to resource degradation. They are designed to enhance the reproductive capabilities of renewable resources, protect areas critical for sustaining and protecting important marine species, and reduce user conflict in high-use areas.

Special-use Areas are used to set aside areas for scientific research and educational purposes, restoration, monitoring, or to establish areas that confine or restrict activities. These areas minimize impacts on sensitive habitats and reduce user conflicts.

Wildlife Management Areas (WMAs) have been established to minimize disturbance to especially sensitive wildlife populations and their habitats to ensure protection and preservation consistent with the Sanctuary designation and other applicable laws governing the protection and preservation of wildlife resources in the Sanctuary.

Existing Management Areas (EMAs) have been established by NOAA and other agencies prior to Sanctuary designation. These zones delineate the existing jurisdictional authority.

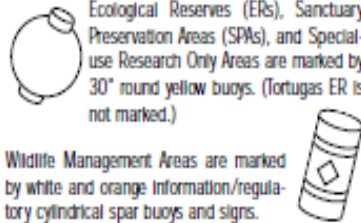
WHERE ARE THE ZONES?

- Ecological Reserves (ERs)**
- Western Sambo
 - Tortugas (North & South)
- Sanctuary Preservation Areas (SPAs)**
- Carysfort/S. Carysfort
 - Cheeca Rocks
 - The Elbow
 - Alligator Reef
 - Key Largo Dry Rocks
 - Coffins Patch
 - Greedian Rocks
 - Sombrero Key
 - French Reef
 - Newfound Harbor Key
 - Molasses Reef
 - Looe Key
 - Conch Reef
 - Eastern Dry Rocks
 - Hen and Chickens
 - Rock Key
 - Davis Reef
 - Sand Key

- Special-use Research Only Areas**
 Located in the vicinity of:
- Conch Reef
 - Looe Key Patch Reef
 - Tennessee Reef
 - Eastern Sambo

- Wildlife Management Areas (WMAs)**
- Eastern Lake Surprise
 - Snipe Keys
 - Crocodile Lake
 - Mud Keys
 - Rodriguez Key
 - East Harbor Key
 - Dove Key
 - Lower Harbor Keys
 - Tavernier Key
 - Cayo Agua Keys
 - Snake Creek
 - Bay Keys
 - Cotton Key
 - Pelican Shoal
 - Horseshoe Key
 - Big Mullet Key
 - Upper Harbor Key
 - Cottrell Key
 - East Content Keys
 - Little Mullet Key
 - West Content Keys
 - Woman Key
 - Little Crane Key
 - Boca Grande Key
 - Sawyer Keys
 - Marquesas Keys
 - Tidal flat south of Marvin Key

- Existing Management Areas (EMAs)**
- Key Largo Existing Management Area
 - Looe Key Existing Management Area
 - Crocodile Lakes National Wildlife Refuge
 - Great White Heron National Wildlife Refuge
 - National Key Deer Refuge
 - Key West National Wildlife Refuge



Ecological Reserves (ERs), Sanctuary Preservation Areas (SPAs), and Special-use Research Only Areas are marked by 30" round yellow buoys. (Tortugas ER is not marked.)

Wildlife Management Areas are marked by white and orange information/regulatory cylindrical spar buoys and signs.

Appendix B: Summary of Regulation for the Florida Keys National Marine Sanctuary <http://mcbi.marine-conservation.org>

Summary of Regulation of Activities and Uses in the Florida Keys National Marine Sanctuary
(For full regulations, see 15 C.F.R. § 922 and contact the regulating agencies)



Type of Use	Regulated by the Sanctuary (NMS)				Examples of Other Regulating Agencies, States/Territories, or Laws (may not be comprehensive list)
	Zoned (areas closed to this type of use)	Restricted	Prohibited	Comments	
Commercial Fishing	√			Listed gears prohibited in some zones; other zones prohibit all fishing	State of Florida, National Park Service, U.S. Fish and Wildlife, South Atlantic and Gulf Fishery Management Councils
Recreational Fishing	√			Listed gears prohibited in some zones; other zones prohibit all fishing	State of Florida, National Park Service, U.S. Fish and Wildlife, South Atlantic and Gulf Fishery Management Councils
Bottom Trawling	√			Prohibited in some zones; other zones prohibit all fishing	State of Florida, National Park Service, U.S. Fish and Wildlife, South Atlantic and Gulf Fishery Management Councils
Collecting Aquarium Fish	√			Zones closed to take of any tropical fish	State of Florida, National Park Service, U.S. Fish and Wildlife, South Atlantic and Gulf Fishery Management Councils
Aquaculture				May be regulated under Discharges and Alteration of or Construction on Seafloor	State of Florida, Army Corps, U.S. Fish and Wildlife, Environmental Protection Agency, National Park Service
Alteration of or Construction on Seafloor	√	√		Zones closed to all anchoring; Sanctuary-wide, listed activities are allowed, e.g., anchoring, traditional fishing, etc.	U.S. Fish and Wildlife, National Park Service
Seabed cables or devices				May be regulated under Alteration of or Construction on Seafloor	Outer Continental Shelf Lands Act, Army Corps, U.S. Coast Guard, FCC
Exploring for, Developing, or Producing Oil and Gas			√		Minerals Management Service, Outer Continental Shelf Lands Act
Exploring for, Developing or Producing Other Minerals			√		Minerals Management Service, Outer Continental Shelf Lands Act
Removal/Damage of Natural Resources	√	√		Listed species are protected in all areas; some zones completely closed	U.S. Fish and Wildlife, National Park Service
Removal/Damage of Cultural or Historical Resources			√		U.S. Fish and Wildlife, National Park Service, Abandoned Shipwreck Act of 1987
Overflights				Not regulated by NMS regulations	Marine Mammal Protection Act
Use of motorized watercraft	√	√		Some zones closed to vessels, other areas have speed and size restrictions	U.S. Fish and Wildlife, National Park Service
Underwater Noise				Not regulated by NMS regulations	Marine Mammal Protection Act
Discharging or Depositing Material Within the NMS		√		Only listed types of discharge are allowed	U.S. Coast Guard
Discharging or Depositing Material Outside the NMS that Might Injure NMS Resources				Not regulated by NMS regulations	U.S. Coast Guard

Other Regulations: The NMS coordinates management with the State (for State waters within the NMS) and the U.S. Fish and Wildlife Service (for Wildlife Refuges within the NMS). The National Park Service, however, maintains its own jurisdiction and no NMS regulations apply to the National Parks within the NMS. NMS regulations authorize permits for research, education, or salvage/recovery operations, even for otherwise prohibited or restricted activities. In addition to the uses regulated in the above table, the following are regulated: possession or use of explosives or electrical charges, release/introduction of exotic species, damage or removal of markers, diving/snorkeling without a dive flag, or release of exotic species.

Appendix C: Keys Parks

John Pennekamp Coral Reef State Park

Key Largo, FL

[Park Brochure](#)

Mile marker 102.5

Harry Harris Beach and Park

50 E Beach Rd, Tavernier, FL 33070 Park

Mile Marker 92.6

25°1.605N 80°29.596W

Public Beach 24°53 3.78N 80°41 11.01W

Windley Key Fossil Reef Geological State Park

84900 Overseas Highway

Islamorada FL

[Park Brochure](#)

Mile Marker 84.9

24°56.962N 80°35.762W

Roadside Park, Bayside

Mile Marker 80

Beach Access 24°53.093 80°41.116W

Lignumvitae Key Botanical State Park

77200 Overseas Highway

Islamorada FL

[Park Brochure](#)

Indian Key Historic State Park

Upper Matecumbe Key, Florida 33036

Offshore Island

Islamorada FL 33036

[Park Brochure](#)

San Pedro Underwater Archaeological Preserve State Park

77200 Overseas Highway

Islamorada FL

24 degrees 51.802'N, 80 degrees 40.795'W

Sea Oats Beach

Mile Marker 75

Anne's Beach in Islamorada

Upper Matecumbe Key,

Mile Marker 73.5

24°50.935N 80°44.455W

Long Key State Park

67400 Overseas Highway

Long Key FL 33001

Mile Marker 67.5

[Park Brochure](#)

Curry Hammock State Park

56200 Overseas Highway

Marathon FL

Mile Marker 56

Sombrero Beach

Mile Marker 50

Bahia Honda State Park

36850 Overseas Highway

Big Pine Key, FL

Mile Marker 36.8

Veterans Memorial Park

39900 Overseas Highway

Little Duck Key, FL

Fort Zachary Taylor Historic State Park

601 Howard England Way

Key West FL

[Park Brochure](#)

Appendix D: Finds on land near the Wreck Site: El Terri

February 16, 2021 to February 18, 2021

Finds near the Wreck Site: El Terri 24° 50.761N 80° 42.850W

February 16, 2021 Blak Bart-- Post

Treasure coins...cut Spanish silver, and 1659 Marevedi in the same hole!! [Treasure Net Web Link](#)

Oh brother....got down to a well known treasure beach. I knew they were in the middle of a beach renourishment that will seal this spot under rock, brick, and concrete. There was a slim chance that between back hoes and excavators that I might be able to sneak in and get a coin or 2 before this spot is done for good!! Well it was worth it and I got a 1659 Marevedi and a cut Spanish silver in the same hole...within 4 inches of each other!! What a thrill!!

February 17, 2021 Blak Bart—Post

3rd cobb in 2 days...4 Reale!! [Treasure Net Web Link](#)

Just trying to save what I can from this spot....watched them haul off treasure filled sand all day....finally got one toward the end of the day right on the edge of US1!!

So should I clean it up for jewelry piece or leave it be?? Its right where it should be for a 4 Reale...13.7 grams!!

I will keep it up as long as I can....there can't be but 2 more days of hunting before everything is sealed up until the next cat 4-5 hurricane

That sand berm in the middle is good treasure bearing material.....it will be sealed off from detecting until mother nature says different !!

Locked under a carpet of brick. Workers have been great to us....giving us every chance possible to get some Spanish Treasure !! Today when

I got to work everyone looked at me and said what are you doing here....you should be treasure hunting while you can....so I left work at noon and was at the spot hunting all afternoon !! So glad to have the support from my boss....hurry up and get down there and get some treasure is all he said !! Happy hunting folks!!

February 18, 2021 Blak Bart-- Post

1733 treasure fleet coin spill, Pillar dollar, 8 Reale cobbs!! [Treasure Net Web Link](#)

Continuing to dig...as per the last 2 days. I don't know what to say !!....I am stunned !! Lost my digging tool i was so excited. Had to scratch out the last cobb with my hands and my partners digger!! WTF!! What a great 3 days it's been!! Today I got a 1733 Pillar Dollar, and a cobb 8 Reale in the same hole!! Another 8 Reale cobb was about 3 feet away...spread by machinery!! I was told to be right here by Chuck "shaggy cannon" Mitchell if they ever dug the beach....I was buddy !! R.I.P. my friend you were right.

Appendix D Continued:

About Blak Bart

Personal Title: beachcomber, treasure hunter, fisherman

Location: FL keys

Gender: Male

Detector(s) used: Minelab primary Fisher secondary Metal Detectors

Occupation: fisherman, boat builder

Primary Interest: All Types of Treasure Hunting

